

ROCKY MOUNTAIN WESTY

Twin Peaks Grill Guard Install



Thank you for purchasing Rocky Mountain Westy bumper products. Your grill guard is crafted from 1.25" .120 heavy duty steel tubing, welded by a certified master welder and professionally powder coated. We hope you enjoy the new look, protection and functionality this grill guard will bring to your Vanagon.

172 Spaulding Lane Fort Collins, Colorado 80524

Tel: 970-310-3441

PARTS/HARDWARE INTVENTORY

- (2) mounts
- (1) center frame
- (2) side frames
- (18) 3/8x16x1.25" SS button head bolts
- (10) 3/8x16 nylon lock nuts
- (28) 3/8" SS washers

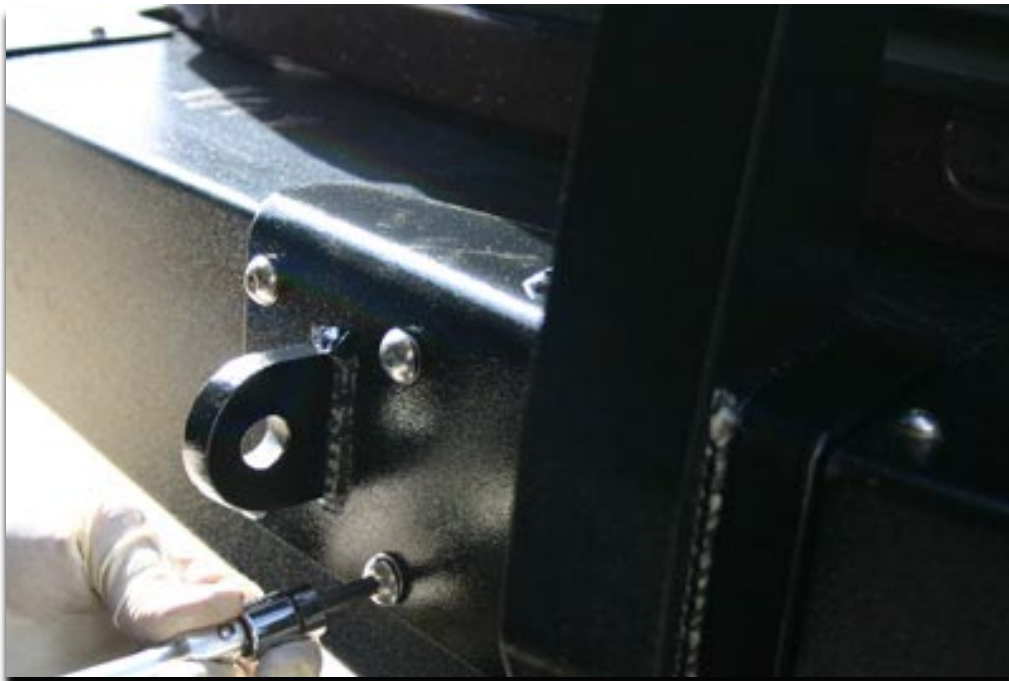
1. Start by removing the 4 / 1" SS button heads from your twin peaks bumper at the mounts, Set them aside as they will not be reused. Please be aware by removing these bolts, your bumper will be loose and need to be supported.



2. Once removed, set the appropriate pillar mount in place with the d-rings toward the outside of the van, and the pillar towards the middle.



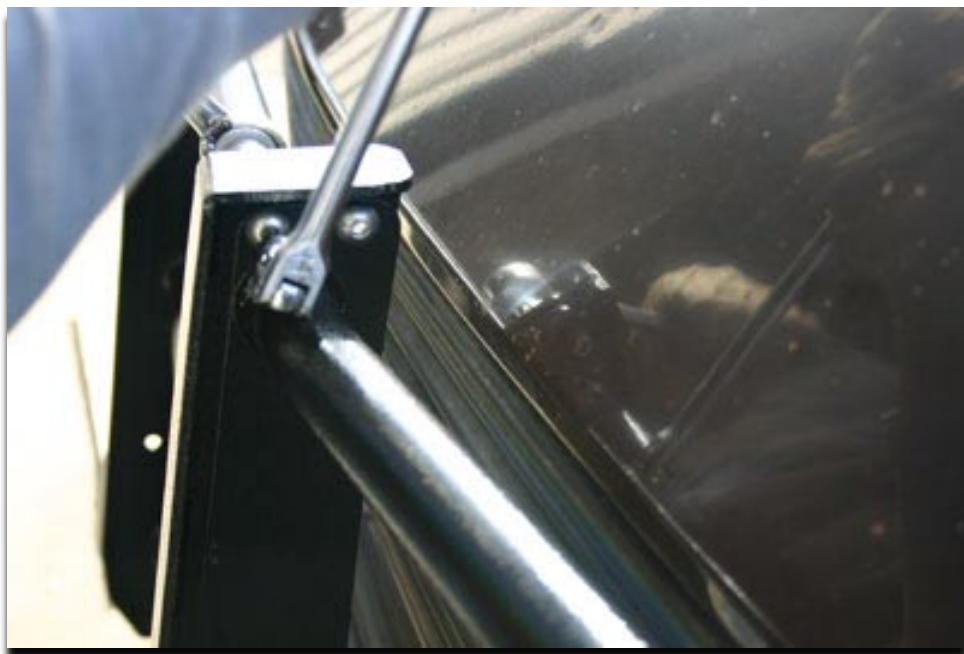
3. Using 4 - 3/8x16x1.25 SS button heads and 4- washers attach the pillar to the bumper. Using a small screwdriver or rod will help in keeping the pieces aligned. Do not fully tighten the pillars at this time.



4. Slide the center frame section between the pillars. (At this point, 4 hands are better than two.) Start by inserting a 3/8x16x1.25 SS button head bolt with washer into the top hole of the appropriate side frame. Attach with a 3/8" lock nut and washer. Repeat for the rest of the holes. Install and set the other side frame in the same manner



5. Tighten all frame bolts first, then the pillar bolts attached to your bumper.



6. Your twin peaks grill guard is now fully installed. Should you have any fitment problems or are missing any hardware, please contact us immediately. Your twin peaks grill guard is coated with a thermo set polymer powder coating which should gives you years of enjoyment. Although we do our best to protect your new purchase, should you get chips or oxidation from the elements, we recommend using a rust proofing gloss black paint such as rustoleum for any touch up.

