



Van Cafe Twin Peaks Rear Bumper Installation Instructions



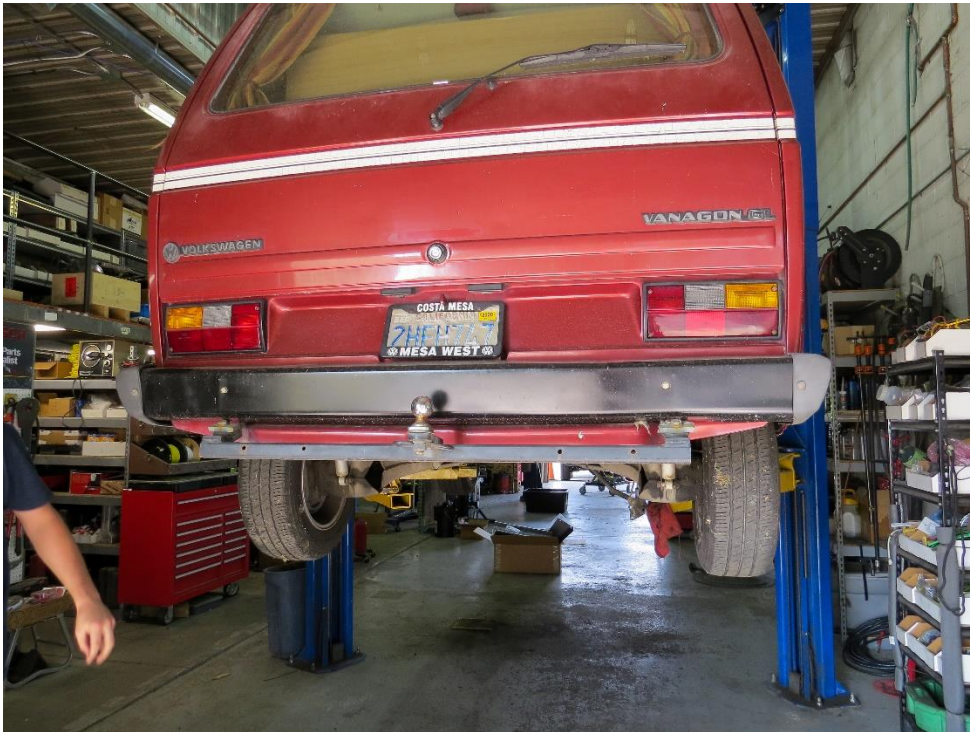
Introduction:

Thank you for purchasing the Van Cafe Twin Peaks Rear Bumper, our proven solution for rugged and durable body protection for your Vanagon. We pride ourselves in the products we develop and will not bring an item to market that we did not fully believe in. Please go to www.vancafe.com to find a full complement of accessories for our Twin Peaks bumper system: grille guards, fog light brackets, D-rings, etc.

Procedure:

1. Remove stock front bumper cover. This varies with each model so choose the appropriate method for your year and configuration.

For metal bumpers:



Remove the plastic screw covers on the bumper end cap and remove the Philips head screw from the body.



Looking under the Van at the rear bumper mounting brackets, you'll see two bolts on each bracket.



Remove these two bolts on either side and carefully remove the bumper from the Van. Try to avoid nicking the paint when you withdraw the brackets from the Van.



2. Looking into the slot in the Van where the brackets were bolted you'll notice a small tab that need to be bent out of the way before we can install the Van Cafe bumper brackets. Simply insert a prybar and carefully pry the tab out of the way.



3. Slide the Van Cafe Twin Peaks bumper bracket into the bumper bracket slot as shown with the flat side toward the outside of the Van. Note the square holes are toward the rear of the Van.



4. Insert an M12 hex bolt through a washer and start the bolt into the bracket from the outside of the frame rail. Leave all bolts loose until all three are in place and then tighten to 33 ft/lbs. Repeat on other side of Van with the second bracket.



5. Slide the center section of the bumper into the mounting brackets as shown.

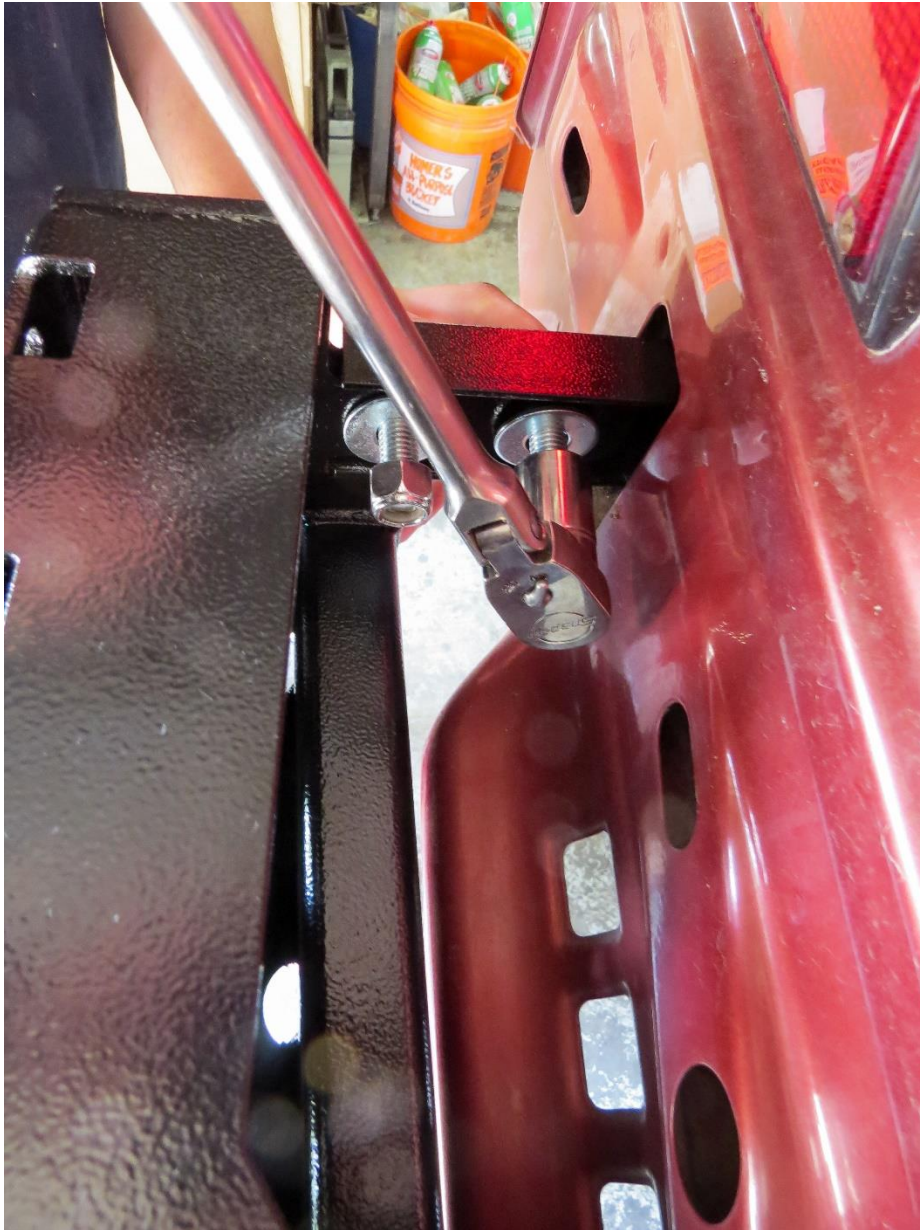


6. Slide a ½” carriage bolt through the bracket and center section from the outward side of the bracket. Place a plastic washer and then a metal washer over the bolt followed by a ½” nylock nut. Tighten the nuts, leaving them just loose enough to move the center in and out for aligning the bumper. Repeat on the opposite side bracket.



7. Position the center section so that the bottom front edge is about 1/8" from the lower valence of the Van. NOTE: keep in mind that your valence is probably not straight after more than forty years of street use. It is easily bent back away from the bumper if needed.

Once you've determined that the gap is even on both sides, you can do a final torque of the carriage bolts that attach the center section to the mounting brackets. Torque to 33 ft/lbs.



8. Tap the larger J-clips onto the center section as shown.



9. Tap all eight j-clips onto both sides of the center section in the orientation shown below.



10. Step back and admire your work so far!



11. Slide one wing over the center section as shown below.



12. Slide a metal washer and then a plastic washer over one of the buttonhead screws.



13. Oil the threads of the buttonhead with a small amount of oil.



14. Line up the four holes in the wing with the j-clips in the center sections and install the oiled buttonhead and washer combinations finger tight.



15. Remember that when installing a component with multiple fasteners, get all the fasteners started in their threads before you begin tightening. Tighten hardware evenly.



16. Repeat with the wing on the opposite side.



17. Tap three of the smaller j-clips into the three holes in the outer edge of each wing.



18. Slide the end cap over the wing and, with a buttonhead/metal washer/plastic washer combination, loosely thread the three fasteners through the holes in the end cap and into the j-clips.



19. Hold the end cap level with the body line of the rear panel and mark the body through the end cap inner mount hole NOTE: While Vans have a hole where the original end cap mounted, this hole only rarely aligns with the mounting hole for the Twin Peaks bumper.



20. Remove the end cap and center punch your mark.



21. Drill a 1/4" hole at your mark.



22. Apply touch-up paint to both your new hole and also the original mounting hole to protect the body from corrosion.



23. Now re-mount the Twin Peaks end cap with the outer three buttonhead screws. Note that some Vans will need a small plastic or rubber spacer inserted between the inner end cap mount and body to maintain alignment of the end cap along the side of the Van. Use the included 6mm bolts, washers and nuts to secure the inner end cap mount to the body.



24. Enjoy your new Van Café Twin Peaks rear bumper!

