



## **SWING AWAY CARRIER FOLDING SHELF KIT**

### **INSTRUCTION MANUAL**

Thank you for purchasing the Rocky Mountain Westy Folding Shelf Kit for the Swing Away Carrier. With our folding shelf, you can stow your gear on the back of your Van with convenient accessibility. Our swing opens 180-degrees allowing you to use the shelf as a table while camping or tailgating. Not carrying gear? Simply fold the shelf and roll. Read through the instructions carefully before you start your project so you'll know just what to expect.

**NOTE: The photos in this installation guide show a left-side swing. If you are installing on the right-side the installation will be the same but the orientation of the swing will be reversed.**

# CONTENTS

<i>SWING AWAY CARRIER FOLDING SHELF KIT</i>	<u>1</u>
<i>UNBOXING AND PREPARATION</i>	<u>3</u>
<i>INSTALLATION INSTRUCTIONS</i>	<u>4</u>

# UNBOXING AND PREPARATION

## CONTENTS

- (1) Custom Powdercoated Shelf
- (1) Shelf Support Mounting Bracket
- (1) Shelf Support Mounting Backing Plate
- (1) Hardware Pack

## HARDWARE

- (2) 3/8 x 16 Star Knob
- (2) 3/8" X 16 X 1 Stainless Steel Buttonhead Screws
- (2) 3/8"X16 Nylock Nuts
- (10) 3/8" Plastic Nut Covers
- (4) 3/8 X 16 X 3/4" Carriage Bolts
- (4) M8 X 1.25 X 50 Stainless Hex-head Bolts
- (4) M8 X 1.25 Nylock Nuts
- (8) 5/16 Stainless Steel Washers
- (8) Black Nylon Washers

## TOOLS REQUIRED

- 7/32" Allen wrench
- 9/16" Socket or wrench
- 13mm Socket or wrench

---

## INSTALLATION INSTRUCTIONS

1. Begin the installation by working directly with the Swing Away Carrier. We'll be attaching the Shelf Support Mounting Bracket to the swing using fastening locations on either side of the bracket. Remove the four bolts that attach the swing latch post to the swing.



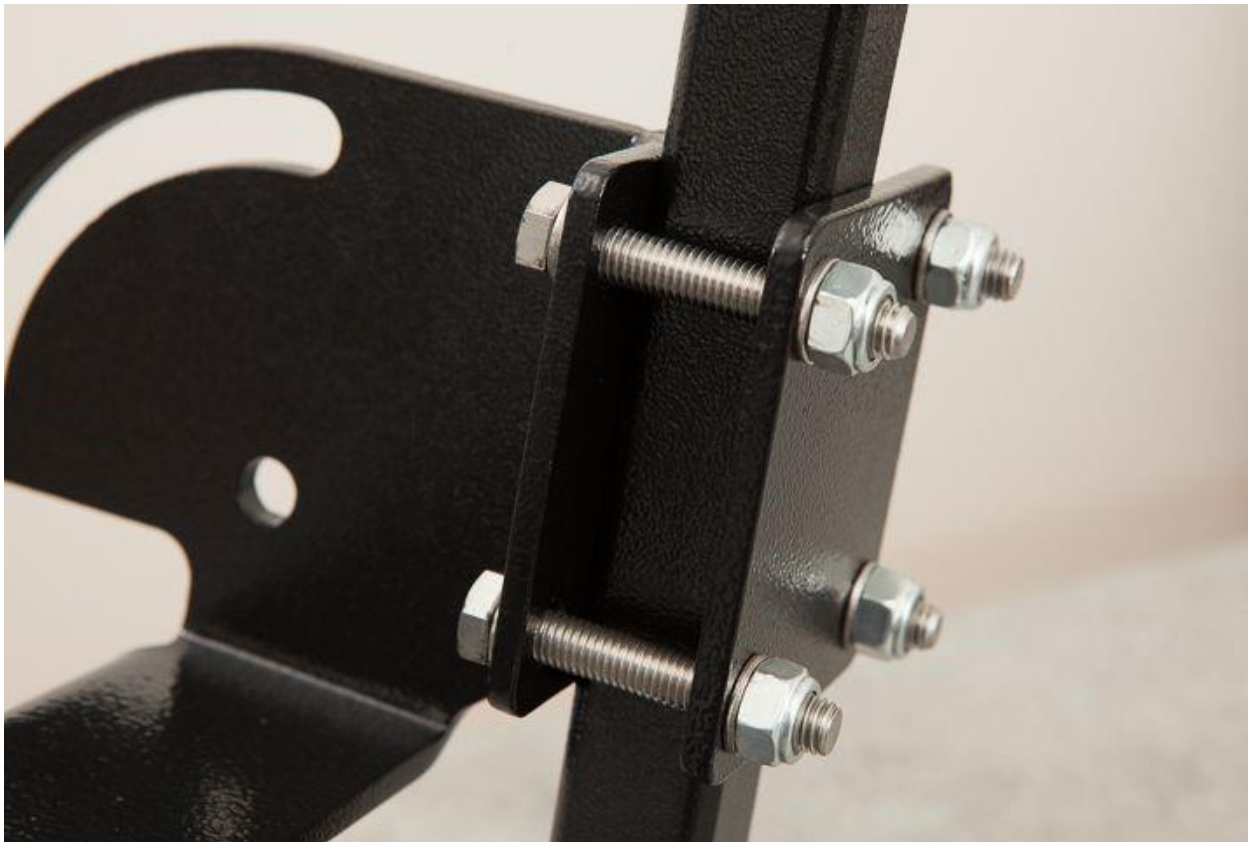
2. Position the shelf mounting bracket under the latch post flange so that the latch post goes through the slot in the bracket and the holes in the three layers of steel align. Insert a 3/8" X 1.25 buttonhead screw and 3/8" washer through each of the holes from the top of the assembly. Thread a 3/8" washer and 3/8" nylock nut onto each and tighten.



**Note**

- The order of the stack should be:
- top = swing flange
  - middle = latch post flange
  - bottom = shelf mounting bracket.

3. Looking to the opposite side of the shelf mounting bracket, note the four bolts holes against the square tube of the swing support. Insert an M8 X 1.25 X 50 hex head bolt and 5/16 washer through the bracket. Hold the included bracket backing plate on the other side of the swing support, push the bolt through the corresponding hole, add a washer, and thread an M8 nylock onto the bolt. Repeat for the other three fastener assemblies and then tighten.



4. The swing and shelf assembly should look like this at this point in the install.



---

**SWING AWAY FOLDING SHELF KIT - VANAGON**

Installation questions? Email [support@vancafe.com](mailto:support@vancafe.com)

page | 7



5. Note the four holes drilled in the vertical rim of the shelf – these will be used to attach the shelf to the bracket. Slide the shelf into the center frame so that the holes in the rim align with the bracket.
6. Insert a 3/8" X 16 X 1" buttonhead and 3/8" washer through the rearmost hole (closest to the corner of the shelf) from the inside of the rim. Slide a black nylon washer between the shelf and the support bracket and push the bolt through the bracket. Add another black nylon washer and 3/8" washer onto the threads and then thread on a 3/8" nylock nut. The goal here is to have a nylon washer on either side of the support bracket to protect the powdercoat of the shelf. Tighten just enough for the shelf to be able to rotate on this pivot point. Repeat for the rearmost hole on the opposite side of the shelf.



---

**SWING AWAY FOLDING SHELF KIT - VANAGON**

Installation questions? Email [support@vancafe.com](mailto:support@vancafe.com)

page | 8





7. Insert a 3/8" carriage bolt through the square hole from the inside of the rim of the tray. Slide a black nylon washer between the shelf and bracket and then push the bolt through the bracket. Add a nylon washer over the threads and then loosely screw on the star-knob. Once again you are protecting the powdercoat with the two nylon washers. Repeat for the opposite side.



---

**SWING AWAY FOLDING SHELF KIT - VANAGON**

Installation questions? Email [support@vancafe.com](mailto:support@vancafe.com)

page | 9



8. To install the plastic but caps, simply line up the flats of the nut with the corresponding shape in the cap



9. Test your shelf! Loosen the star knobs and fold the shelf up against the swing. Tightening the star knobs will hold the tray in this stowed position. Loosen the knobs and lower the tray for the carrying position. Always be sure to tighten the knobs to keep the shelf secure in all positions.

---

## **CONGRATS! YOU'RE FINISHED WITH THE INSTALLATION!**

We pride ourselves in the products we develop and would not bring an item to market that we do not fully believe in. Please reach out to us at [support@vancafe.com](mailto:support@vancafe.com) if you have any issues or concerns. Also, please take a moment to leave us a great review on our website and show your love for Van Cafe!