



Van Cafe Twin Peaks Front Bumper Installation Instructions



Introduction:

Thank you for purchasing the Van Café Twin Peaks Front Bumper, our proven solution for rugged and durable body protection for your Vanagon. We pride ourselves in the products we develop and will not bring an item to market that we did not fully believe in. Please go to www.vancafe.com to find a full complement of accessories for our Twin Peaks bumper system: grille guards, fog light brackets, D-rings, etc.

Procedure:

1. Remove stock front bumper cover. This varies with each model so choose appropriate method for your year and configuration.

For metal bumpers:



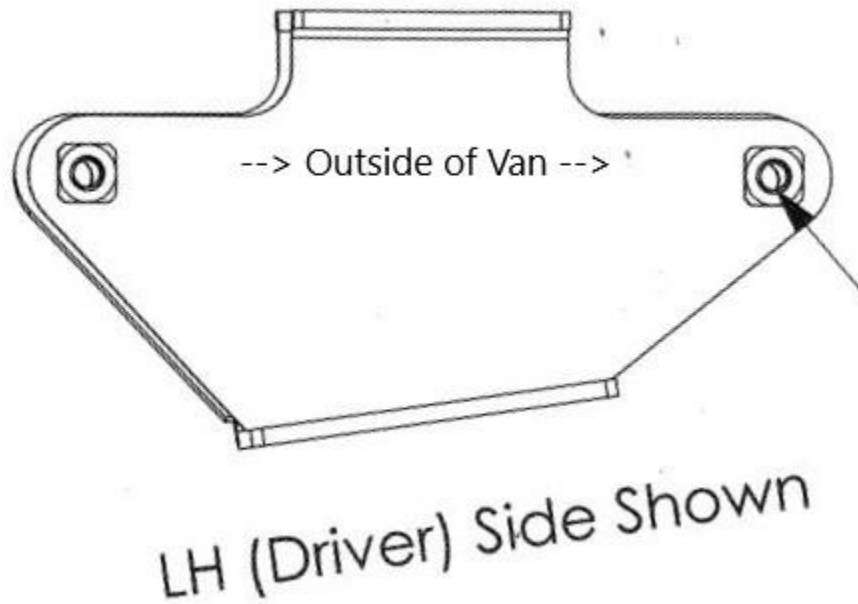
Remove the plastic screw covers on the bumper end cap and remove the Philips head screw from the body.



Remove the two bolts that hold the front bumper to the inner bumper support and remove the bumper.



2. Locate your Twin Peaks Front bumper mounting brackets. You'll notice that these are side specific based on the angle of the finished plate bumper. The correct angle of the bracket will place the side nearest to the bumper support toward the outside of the Van: See diagram below showing the left (driver's side in North America) looking from the top.



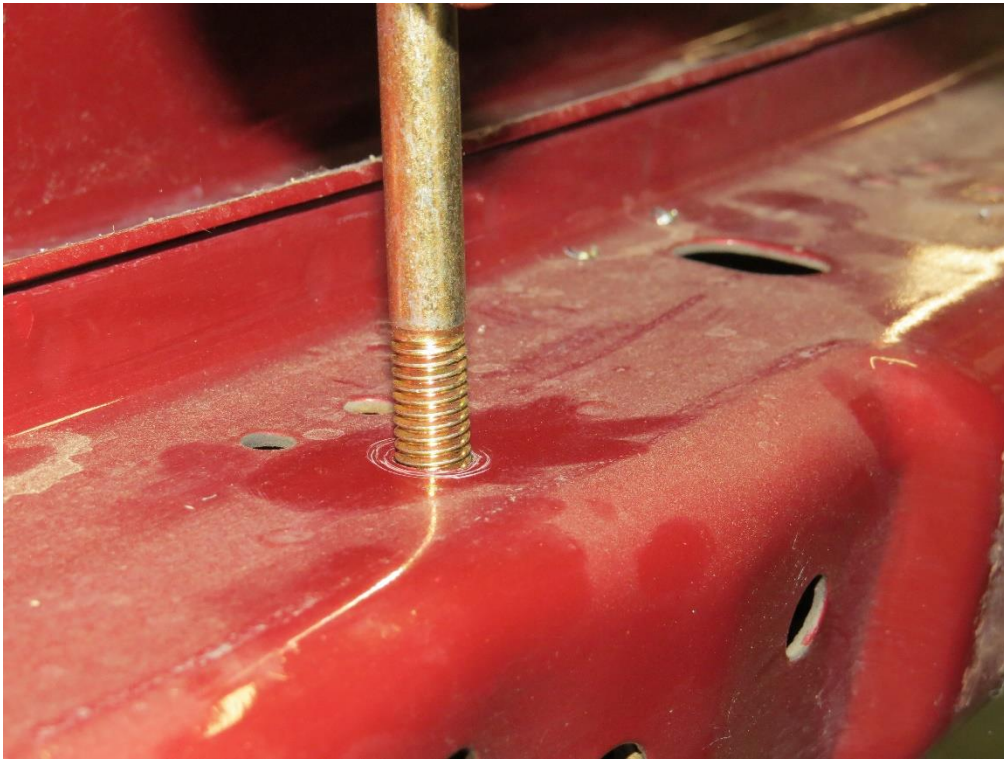
3. Take a look at the inner bumper support on your Van. You'll notice that there are two sets of three holes in the top of the support on each side of the Van. We're going to be using the two front holes of these sets for the Twin Peaks mounting brackets.



4. Using a ½” drill bit or a step bit, enlarge the front hole.



5. Use one of the included 4.5" hex bolts to verify that the hole is large enough to use.



6. Slide the mount over the support and temporarily thread two hex bolts through the top of the mount and into the holes you just enlarged. No need to screw them all the way through the support – just an inch or so through the sheet metal.



7. Working from under the bumper support, clamp the rear vertical flange of the mount to the pinch weld below and behind the support.



8. Mark the bracket lower mounting holes on the inner support.



9. Remove the bracket and center punch the middle of your bottom marks.



10. Drill a 1/8" pilot hole on your marks...



11. ...and enlarge the holes to ½”.



12. Deburr and touch up each of the holes you've drilled with a paint pen or enamel paint. These won't show after you install the Twin Peaks so no need to be overly neat here.

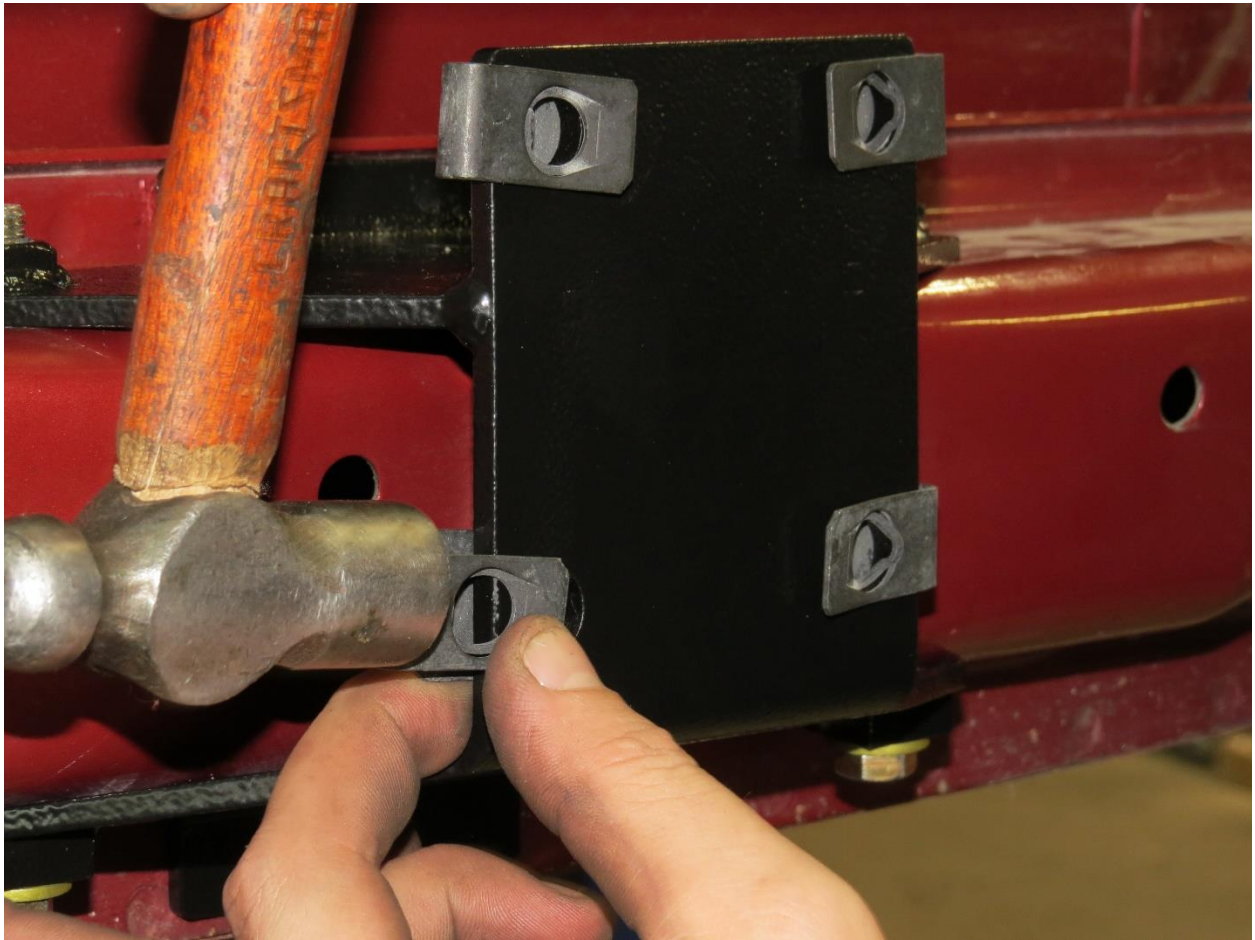


13. Reinstall the mount over your drilled holes and slide the hex bolts **up** through the bracket and support. Thread them loosely into the welded nuts on the top of the bracket. **NOTE:** Due to manufacturing vagaries in the Van (as well as 40-years of bumps and use, you may have to slightly oval the lower hole in the support to allow the bolt to line up with the welded nut).



14. Torque the carriage bolts to 33 ft./lbs.
15. Repeat for the other mount.

16. Install four J-clips into each of the mounts as shown.



17. Assemble the buttonhead bolts, metal and plastic washers as shown in the photo below. The plastic washer goes to the inside to protect the powder coat.



18. Loosely attach the two Twin Peaks wings to the mounting brackets using four bolt assemblies per side. Leave these loose for adjusting alignment.



19. Lightly tap j-clips onto the two upper and one lower hole on the center of the wings.
NOTE: install the j-clips so that the smaller of the holes is under the bumper hole.



20. Loosely install the center section by placing the buttonhead/washer/plastic washer combo through the center section and into the j-clips in the wings. You can tighten these down snugly to align the center section to the wings.



21. You can now tighten the (8) buttonhead bolts holding the wings to the brackets.

22. Step back, take a break and admire your handiwork – it's all starting to come together!



23. Install j-clips in the outer three holes on the wings (two upper, one lower).



24. Slide the end cap onto the wing and very loosely install the hardware.



25. NOTE: Notice the support on the inside of the end cap. This is designed to attach to the body of the Van through the original screw hole. Due to 40-plus years of use and abuse, we find that the support and screw hole rarely line up perfectly. We've included hardware for this eventuality.

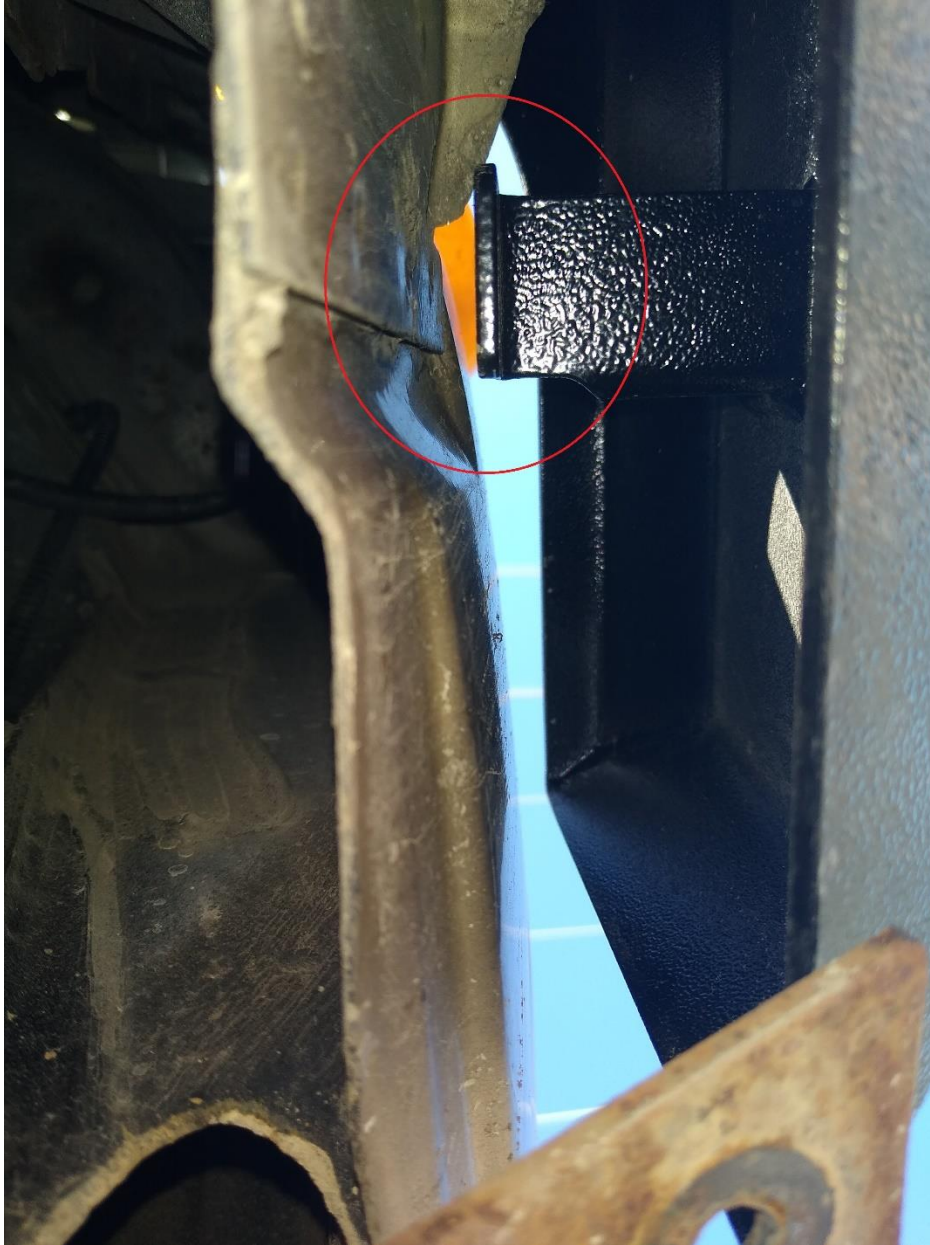
26. Level the end cap to the body line on the body of the Van.



27. Mark the Van body through the hole in the end cap and remove the end cap. Enlarge the hole to 5/16". Deburr and treat the hole with touch up paint.



28. Slide end cap back onto the wing, loosely install the buttonhead bolts and then look up from under the assembly. Some Vans may have a space between the support and the body and may need to have a plastic spacer inserted to align the end cap to the body.



29. Tighten the hardware to secure the end cap to the body of the Van while ensuring that the end cap is straight relative to the body line.



Now get out there and enjoy your Van!

