

## **Table Drawer Assembly and installation:**

**Revision: 1**

### **Tools Required:**

3/8" Wrench or ¼ drive 3/8" socket + ratchet  
11/32" Wrench  
1/2" Wrench or socket  
3/32" Allen wrench  
5mm Allen wrench  
1/8" Allen wrench  
Philips head screw driver  
2 sets of pliers  
Ice cold beverage and tunes of your choice

### **Drawer Parts Included:**

Inner Drawer  
Back cap  
RH Pocket  
LH Pocket  
Aluminum Slider Plate  
Aluminum T-Slot profiles (2)  
Aluminum Bolt Plates (4)

### **Hardware: Drawer Assembly (Pack A)**

(8) #8-32 x 1/4" SS screws (Slides)  
(2) #8-32 x 5/8" SS screws (mag latches)  
(10) #8-32 Nylock Nuts  
(10) #10-32 x 5/16" SS screws (Back Cap, hinges, lanyards)  
(10) #10-32 Nylock Nuts  
(2) 6" wire lanyards  
(2) Magnet Latches  
(2) Zinc Plated Hinges

### **Hardware: Lower Slider Assembly (Pack B)**

(4) plastic sliders  
(4) M6 thumb screws  
(4) M6 Nut Plates  
(1) 5/16" bolt  
(2) 5/16" OS washer  
(1) 5/16" thumb screw  
(4) M8 Nut Plates  
(8) M8 x 14mm SS screws  
(4) Aluminum Bolt Plates  
(1) Square Alum Nut Plate (No longer required)

- (1) Alum Tube extension
- (8) #10-32 x 5/16" SS screws
- (8) #10-32 Nylock Nuts

#### **Hardware: Table Top (Pack C)**

- (2) Mag Latch Striker pads + 2 wood screws (included w/ Latches)
- (8) silver wood screws

#### **Hardware Addendum:**

- (4) Large M6 x 25mm Thumb Screws
- (4) 1/8" M6 Nylon Spacers
- (4) M6 Waveloc Washers
- (1) M10 x 40mm Hex Bolts
- (1) M10 x 3" Oversize Washer
- (1) 1/2" x 3" Large Plastic Washer

#### **Drawer Assembly: (Use Hardware from Pack A)**

1. Start by disassembling the drawer slides. Extend the inner slide and press the release lever to the right. With the lever pressed, carefully pull the inner slide straight out.



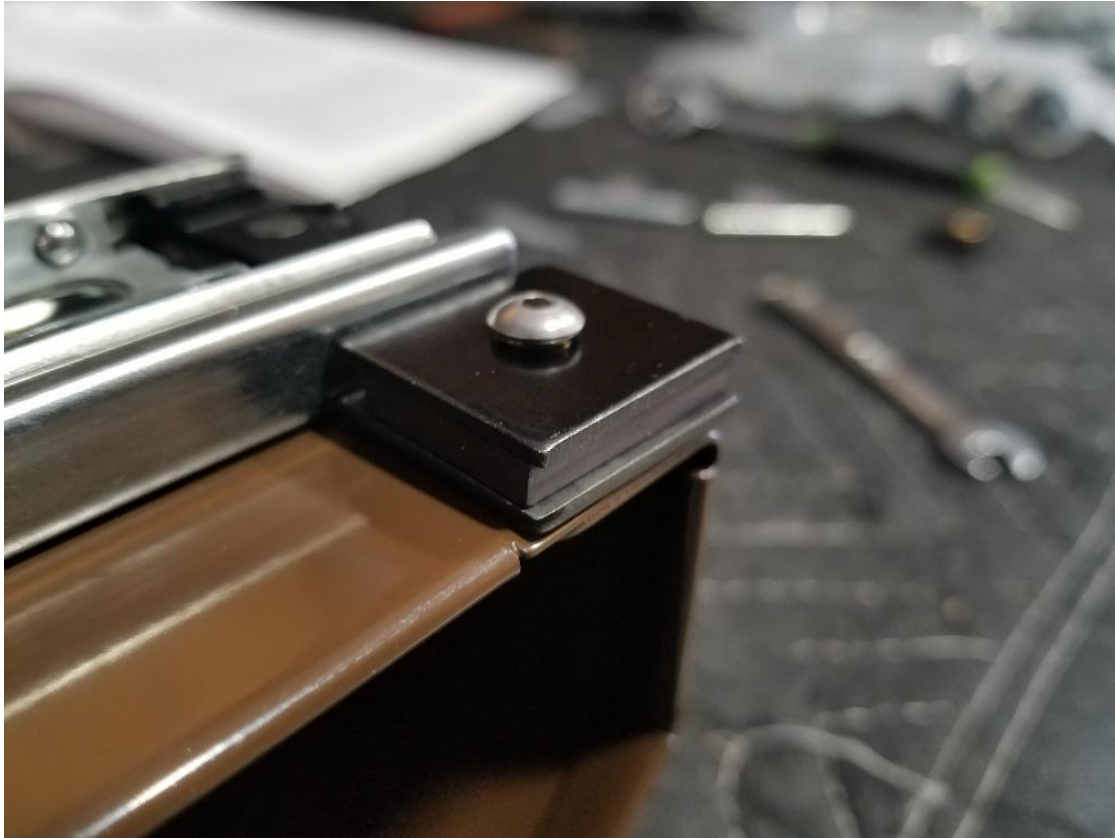
2. Using (4) #8-32 x 1/4" SS button head screws and nylock nuts, bolt the both inner slides to either side of the drawer as shown.



3. Use another (4) #8-32 x 1/4" SS button head screws and nylock nuts to bolt on the outer slide to the RH and LH side pockets as shown.



4. Attach the magnetic latches using the (2) #8-32 x 5/8" SS button head screws and nylock nuts as shown. The latch should poke up slightly above the top of the side pocket and be roughly flush with the front face. Make sure the latch is squared up to the edge before tightening the screw.

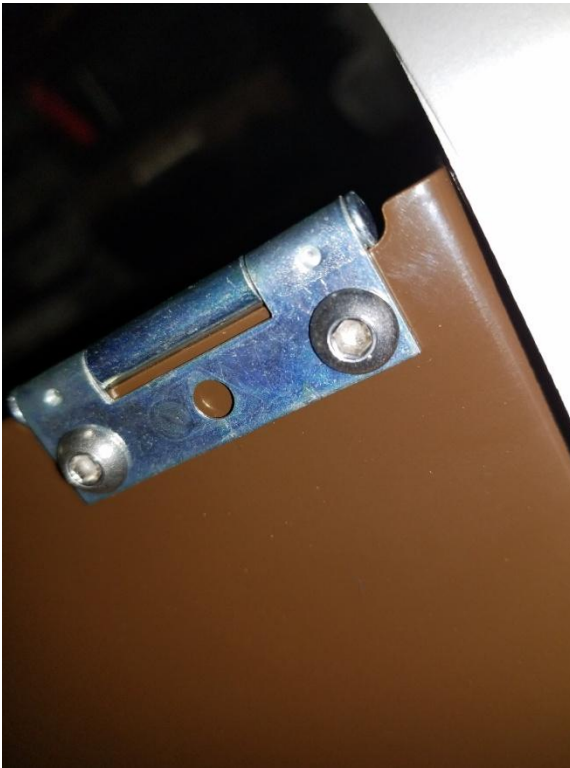


5. Attach the 6" wire lanyards to both of the side pockets as shown using (2) #10-32 x 5/16" SS button head screws and nylock nuts. **Do not fully tighten! They will need to be loose enough to rotate freely around the bolt.**





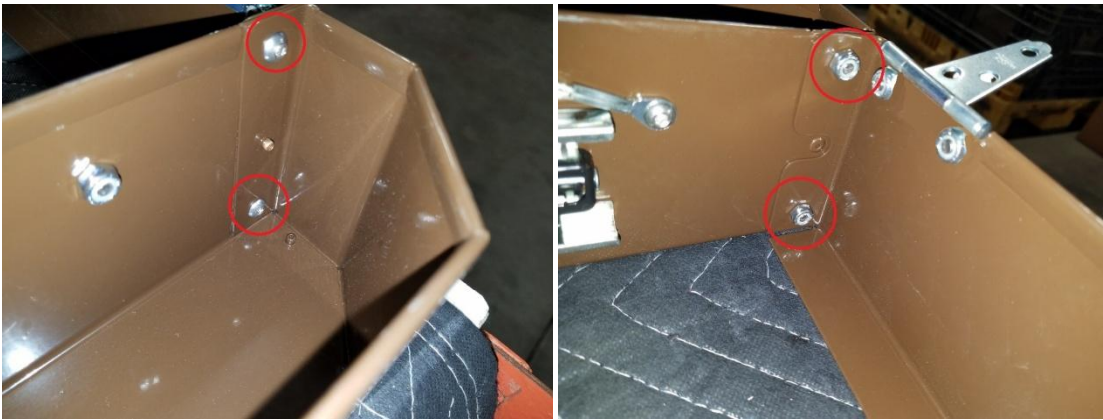
6. Using (4) #10-32 x 5/16" SS button head screws and nylock nuts, attach the table hinges to the **back side** of the back cap as pictured.



7. Both side pockets can now be attached to the drawer by carefully sliding the outer slide onto the inner slide. Set the Drawer upright on the table and carefully align the slides. **Make sure the slide is aligned with one another before sliding the pocket down, otherwise damage to the bearing cages can occur.** You should hear an audible click once the slide is fully engaged.



8. You can now attach the back cap to both LH and RH side pockets using (4) #10-32 x 5/16" SS button head screws and nylock nuts. Doing so on a nice flat surface can aid the assembly.



**Bottom Slider Assembly: (Use Hardware Pack B)**

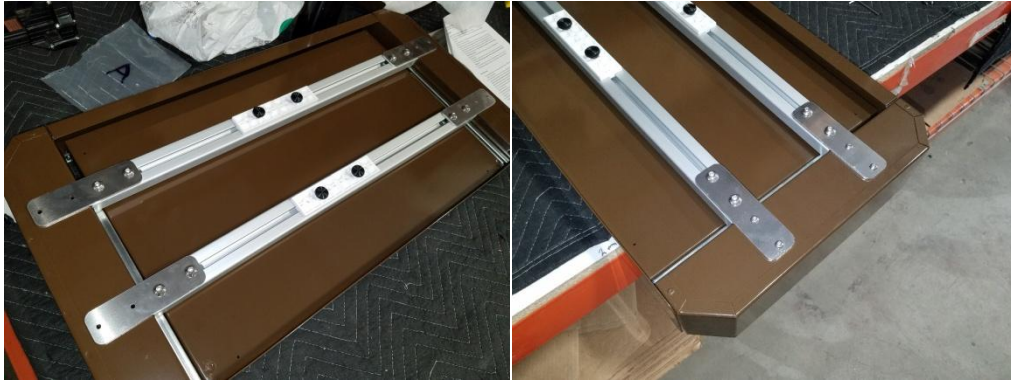
9. Start assembling the aluminum slider channels using (2) plastic sliders, (2) M6 thumb screws and the (2) M6 nut inserts for each slider. Move them to the middle of the channels for now.



10. Next, insert the (4) M8 slide nuts into each end of the channels as shown. Using (8) M8 x 14mm SS button head screws, loosely attach the (4) Aluminum Bolt Plates.



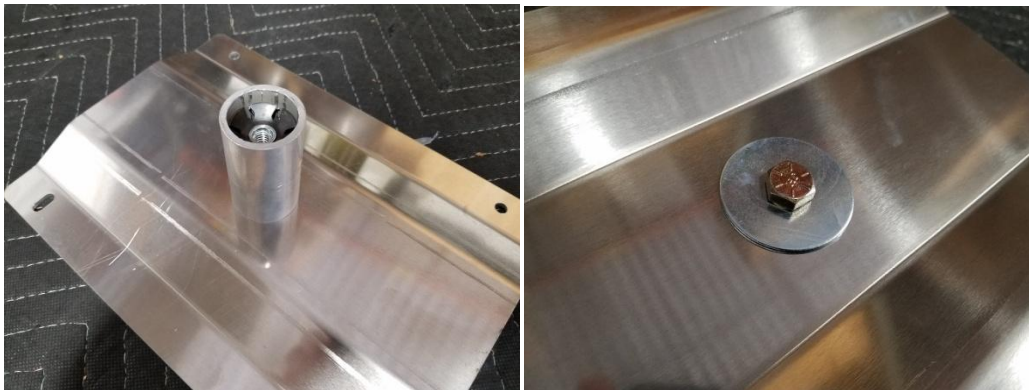
11. With both channels preassembled, you may now flip the table drawer over and gently lay it on the table. Next set each channel onto the bottom of the drawer and align the bolt plates with the holes in the end caps. Attach using (8) #10-32 x 5/16" SS button head screws and nylock nuts as shown. **Tip: Hang the end of the drawer off the table slightly to get access to the inside of the end cap.** Once the #10 screws have been tightened, you can now tighten the (8) M8 screws as well.



12. Before completing this next step, you must first identify which style of table leg your van has. There is a **Tube type** and a **Flat type** pivot mount.

- **Tube type Slider Assem:**

12a. If your table leg uses a **Tube type** lower pivot, you can now attach the included aluminum tube extension using the included 5/16" bolt and washer to the aluminum slider bracket. (The Van used in these instructions uses a Tube type and will be shown in further detail below).



- **Flat type Slider Assem:**

12b. If your Van has the flat style table leg however, you will not use the aluminum slider and extension shown above. Instead you will use the factory table base attached to your table. First remove the base from your table top and carefully drill out the 4 holes to roughly 5/16". Sand down the holes to remove any sharp edges.





13. Once you have the slider assembled, you can set it onto the plastic slider pads. Next install an M6 wave lock washer and a M6 Nylon spacer onto each of the 4 large M6 Thumb screws and install.





#### Attaching the Table Top: (Use Hardware Pack C)

14. First remove the table top from the table leg if you haven't already done so. Flip the table over and remove the 4 Philips head screws that attach the factory bracket.



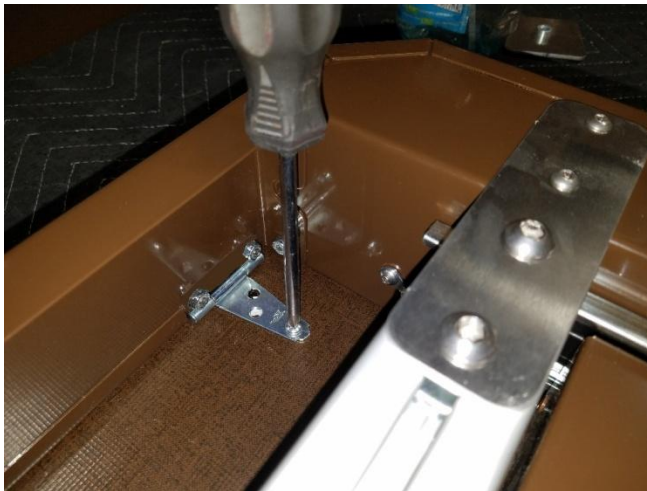
15. Next, place the two steel magnet latch pads onto the magnets as shown. The countersunk side should face the drawer. (Left and Right side shown respectively):



16. Carefully flip the Drawer over and place it onto the bottom of the table top noting which side you'll want to face the front. Then line up the back of the Drawer so that it is flush with the back edge of the table top, as well as center it so that the overhang is roughly even on the sides.



17. Next, carefully pull out the inner drawer slightly so you can access the back hinges. Double check that the drawer is still located on the table properly and install one of the silver screws into each of the hinges. With some downward pressure, screw in the screws by hand making sure not to over tighten **(Do NOT use a drill!)**.



18. To install the magnetic latch plates, pull the inner drawer out and release the drawer slides to remove it from the table and set it aside for now. Ensure the (2) striker pads are still positioned properly on the magnets and install using the small black countersunk screws. With some downward pressure, screw in the screws by hand making sure not to over tighten **(Do NOT use a drill!)**.



19. Once the magnet latch pads are attached, you may reinstall the inner drawer, again making sure that the slides are properly aligned. Next, pull up on the drawer assembly and lean it back against something so you don't have to hold it up (wall etc...). This will allow for easier access to install the remaining (4) silver screws into the hinges.



20. Before attaching the lanyards to the table, you'll need to put a slight bend on the end (~30degrees) using some pliers.





21. Next, pull the lanyards directly back to the table, and mark the holes with a permanent marker. With some downward pressure, install the remaining (2) silver wood screws by hand making sure not to over tighten (**Do NOT use a drill!!**).



#### **Final Installation (Flat Style Table Leg):**

22. Disassemble the factory thumb screw by tapping the end of the bolt with a hammer while holding the other end in your hand. Remove the cap and M10 bolt and replace it with the longer one provided in the kit, and reinstall the cap.





23. Set the large 3" plastic spacer washer onto the table base, followed by the 3" steel washer.



24. Next reinstall the factory wave washer followed by one of the regular washers onto the thumb screw. Then, flip the table leg over and set it onto the slider assembly and install the thumb screw.



25. With the table leg attached, you may now install it back into the van.

**Final Installation (Tube Style Table Leg):**

26. Re-Install the table leg into the van (if you haven't already done so). Next, drop the table drawer down onto the table leg.
27. Screw in the 5/16" thumb screw in the bottom of the table along with a 5/16" washer to secure the table drawer to the table leg.



### **Using the Table Drawer:**

First of all, give yourself a pat on the back for having completed the daunting process of assembling your awesome RMW Table Drawer! Here are a few tips to get the most use and proper function out of your drawer:

- **Swinging out the Table Drawer Assembly:** We've found that lifting the table leg (not by the drawer) is the easiest way to swing out the assembly. Once the table leg's pin is out of the slot and resting on the top surface of the lock, you can rotate and position the table. Lifting the Table Drawer is **not recommended** and may cause damage.
- **Lower Slider operation:** You will want to tighten each of the thumb screws (5 total) under the Table Drawer when it is put in the stowed position. This will keep it from rattling or moving out of position while driving. When loosening the thumb screws in order to slide the Table Drawer, make sure not to loosen them more than a full turn.
- **DO NOT** use your Table Drawer as a step or a seat! Simply put, stepping or sitting on your Table Drawer **WILL damage it!**