



## **Twin Peaks Full Grille Guard**

### **Installation Instructions**

NOTE: Thank you for purchasing the Van Cafe Twin Peaks Full Grille Guard. Please note that this edition of the instructions for this product is an interim document. Please read the steps in the installation instructions carefully, as the text will be more relevant to the current iterations of the Full Grille Guard than the photos.

We appreciate your patience as we revise our product documentation.

### **PARTS/HARDWARE INTVENTORY**

- (2) mounts
- (1) center frame
- (2) side frames
- (8) M10 Slip on J-clips
- (16) M10 x 1.25 X 30mm SS button head bolts
- (2) M10 x 1.25 X 25mm SS button head bolts
- (10) M10x1.25 nylon lock nuts
- (28) M10 SS washers
- (10) Black plastic nut covers

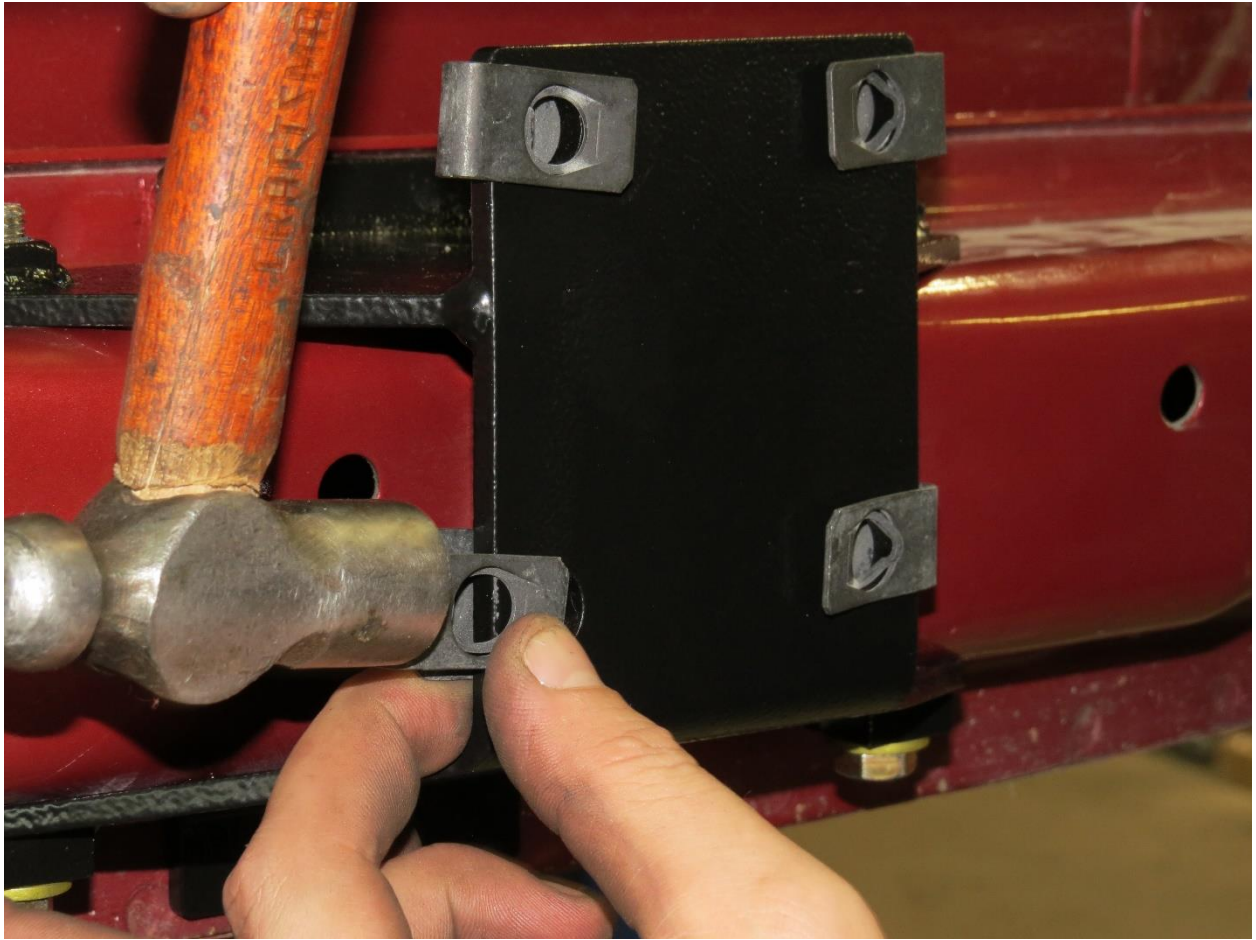
## Installation:

1. If you are installing your Twin Peaks Fron Bumper and Twin Peaks Full Grill Guard at the same time, please reference the front bumper instructions for the relevant steps for assembling your bumper. You may skip to step 4 after getting you bumper built.
2. For existing Twin Peaks bumpers, start by removing the two fastener sets that attach your four end caps to the body of the van. Next remove the eight SS button heads from your twin peaks bumper at the mounts.

**Caution:** these bolts are the only things holding your bumper to the van at this point. You may want to grab a friend to help lift the bumper away from the van. The eight buttonheads will not be reused.



3. You will find new M10 slip-on j-clips in the hardware pack of the Twin Peaks Full Grille Guard. Remove your old j-clips off from your Twin Peaks Front Bumper Mounts and install the new ones in the same positions



4. Locate the right-side pillar mount upright of the Twin Peaks Full Grille Guard (For reference, the d-ring mount will be toward the center of the van). Have a friend hold your front bumper up to the van with the holes aligned to the j-clips you just installed. Hold the grille guard pillar mount over the holes and thread four M10x1.25x30mm buttonhead screws through the holes and into the j-clips. Leave the bolts loose at this time. NOTE: You may have to reposition the j-clips slightly to align with the holes in the bumper and grille guard pillar upright.
5. Install the left-side grille guard pillar upright in the same way, again leaving the fasteners loose.



6. [For this step, using a friend's help is advisable.] Slide the center frame section between the pillars and hold it in place. Insert an M10x1.25x30mm SS button head bolt with washer into the top hole from the inside of the left center frame. Now take the left side frame and position it over the threads of the button head bolt. Attach with a 3/8" lock nut and washer. Repeat for the rest of the holes, noting that **the lowest of the five holes will use the M10x1.25x25 buttonhead bolt**. Install and set the right side frame to the pillar upright in the same manner.
  
7. Tighten all ten frame bolts first, then the eight pillar bolts that affix the bumper to your van.



8. Reinstall the fasteners connecting the end caps to the body.
9. Install the plastic nut caps over the ten M10 Nylock nuts for a finished look.

