

# Speed Sensor (Automatic Transmission)

1. Remove the axle bolts on the rear passenger's side inner axle. Place sensor ring on the outside of the cup under the axle bolts with axle bolt washers on the inside of the ring (Fig. 1). Reinstall the axle bolts and torque them to factory specifications of 33 ft. lbs.
2. Make certain the kick down rod from VW transmission to the stock VW throttle body is removed. Discard this rod and the bolt attaching it to the bracket. This will not be used again in the conversion as you are supplied with a custom *RMW* cable that replaces it.
3. Re-install the stock throttle cable running from the accelerator to the transmission if it was removed in the conversion process.
4. Install provided *RMW* bracket in the two existing holes located behind the stock kick down / throttle cable bracket / lever already present on the transmission. (2) 10 x 1.5 x 15 bolts are provided with your bracket (Fig. 2). Make certain to clean or chase the holes prior to installing bolts. The bracket shown in Fig. 2 is the kick down cable bracket without the speed sensor part. If you are using a *RMW* speed sensor, automatic transmissions will use 1 bracket for the speed sensor and the kick down cable that runs from your transmission to your throttle body (Fig. 3).
5. Insert the speed sensor into the bracket and tighten the two jam nuts up against the bracket which will hold the speed sensor stationary. You'll want to keep the speed sensor at a maximum distance of 3/16" from the highest point of the tabs on the speed sensor ring (Fig.3).
6. You will need to crimp on the provided butt connectors to the 3 wires in the junction box which are key on power (ignition hot), ground, and signal. After this connection is made use a heat gun to shrink the housing of the butt connector and route the connector end of the speed sensor into the junction box.(Fig. 4). Store them in the junction box. Make certain to secure the wire that comes off the speed sensor so it does not interfere with the axle.

Fig.1

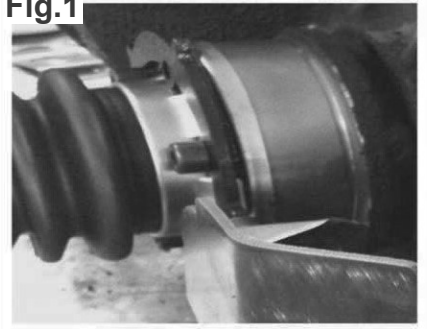


Fig.2

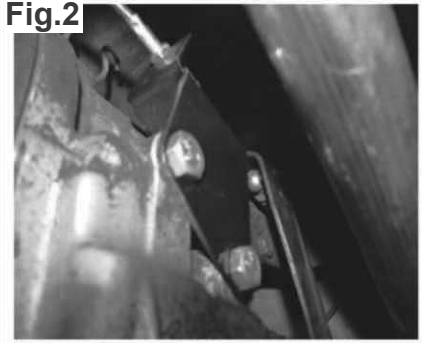


Fig.3

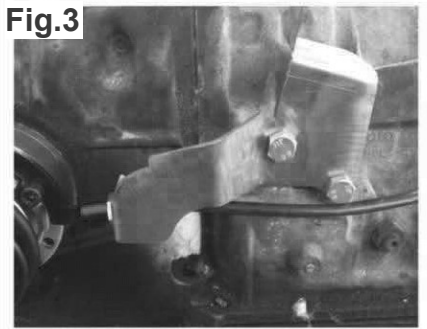


Fig.4

