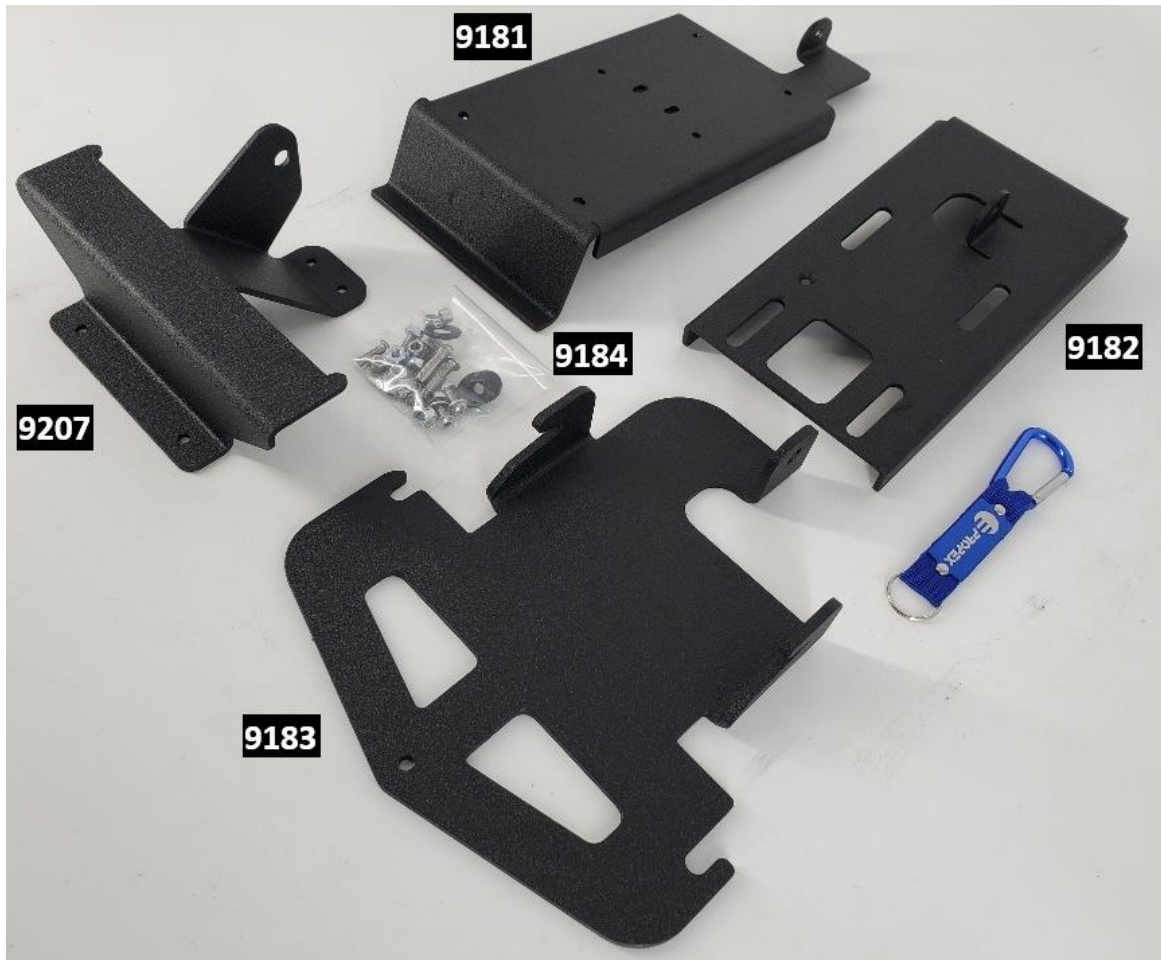




Installation Instructions

9180 – Vanagon PS2000 Window Mount Kit



- **What's Included:**

Part #:	QTY:	Description:
9182	1	Upper Window Side Bracket – Wrinkle Black Powder
9181	1	Lower Window Side Bracket – Wrinkle Black Powder
9207	1	Hanger Bracket – Wrinkle Black Powder
9183	1	PS2000 Side Mounting Bracket – Wrinkle Black Powder
9184	1	Hardware Kit (Bag A, B, C)

- **Hardware Kit Contents:**

- Bag A:**

- 4 – #10-32 x 5/8" BH Hex drive Bolt
 - 5 - #10 SS Flat Washer
 - 5 - #10-32 Thin Nylock Nut
 - 1 - #10-32 x 3/4" CS Hex drive Bolt

- Bag B:**

- 3 - #10-32 x 5/8" BH Hex drive Bolt
 - 6 - #10-32 Thin Nylock Nut
 - 4 - #10 SS Oversized Washers
 - 4 - #10 Aluminum Standoff
 - 4 – 3/8" Black Nylon Washer
 - 1 – #10-32 x 1" BH Hex drive Bolt
 - 1 – ¼" x 1.5" SS Extension Spring

- Bag C:**

- 1 - #10-32 x 3/4" Torx Drive Bolt
 - 1 - #10 SS Oversized Washer
 - 1 – Blue Carabiner Lanyard

- **Required Tools:**

- 1/4" Drive Ratchet
 - 3/8" Deep Socket
 - T25 Torx Bit (optional)

- 1/8" Allen Wrench
 - Painters Tape (or scotch tape)

- Your favorite beverage
 - Some tasty 'jams'

- **Bracket Assembly Instructions:**

Step 1: Start by grabbing the lower window bracket (9181) and the hanger bracket (9207). Attach the hanger bracket to the face of the lower window bracket using the Bag A hardware. Insert the (4) #10/32 Button Head Screws as shown below, followed by a #10 washer and nylock nut on the back side.



Step 1 Cont.: With all four screws in place, go ahead and tighten them using a 1/8" Allen wrench and a 3/8" socket wrench:



Step 2: Next, grab the upper window bracket (9182), and install the countersunk screw into the countersunk hole. Install the remaining SS washer and nylock nut, and tighten.



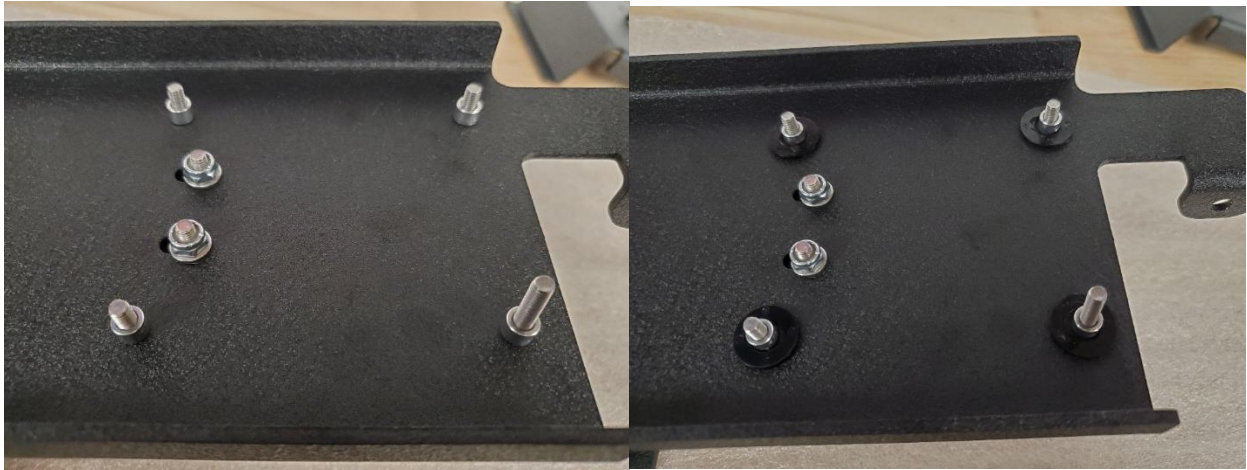
Step 3: Now grab the partially assembled lower window bracket (9181) and insert the (3) #10-32 x 5/8" screws and (1) #10-32 x 1" screw from bag B as shown in the image below. (Note: the 1" long screw is shown in the lower RH corner):



Place a piece of painter's tape or scotch tape on the face of the screws to help hold them in place for further assembly:



Step 4: Next, slide on the (4) aluminum spacers, followed by the (4) plastic washers (Note: make sure the plastic washer hasn't slipped under the spacer):



Step 5: Now place the upper window bracket over the four screws, followed by the (4) oversized SS washers and (4) Nylock nuts. Keep the brackets tight to one another to prevent the washers from slipping under the aluminum spacers (Tip: It may help to tape the upper and lower brackets together to aid in this process). Remove the tape from one screw at a time and tighten.



Step 6: Lastly, install the small extension spring onto the 1" long screw and the countersunk screw followed by the remaining (2) Nylock nuts. Do not fully tighten these nuts however! Simply tighten until the nylon lock portion can secure the nut to prevent loosening.



🎆 Huzzah!!! 🎆

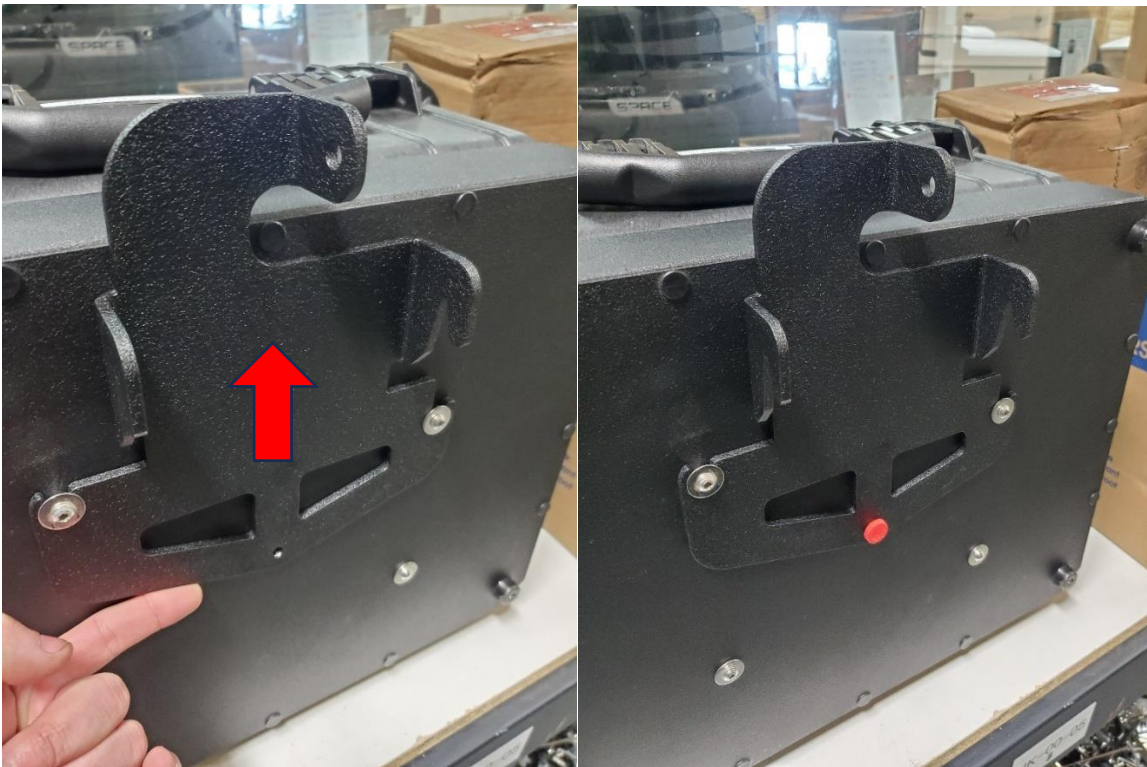


Proper Use Instructions:

Important: The Vanagon PS2000 Heater mount is designed for static camp use only and should NOT be used while driving. Remove the duct's, regulator/hose assembly, thermostat and any items you may need from the case before mounting it to the Van.

1. Begin setting up by installing the heater side bracket (9183) to the back of the PS2000 heater. Remove the red thumbscrew in the center of the heater, slide the bracket onto the upper two posts and reinstall the thumbscrew.

(NOTE: The kit includes (1) #10-32 x ¾" long T-25 Torx head screw and an additional oversized washer to be used in place of the thumbscrew if you wish to add additional theft protection.)



2. Next, install the assembled window mounting bracket by first inserting the lower flange into the aluminum slider window channel as far back as possible. Then, pull down on the upper portion near the lock tab to get it clear the window seal and release. Secure with the provided blue carabiner or a small padlock.



3. With the window bracket secured to the van, you can now lift your PS2000 onto the bracket. Use the lock tabs to help visually find center and drop the heater onto the hanger flange. Once, on the bracket, slide the heater to the left so that the lock tabs meet. (Optional: secure the heater to the window bracket via a small padlock).

Note: The heater side bracket will flex a bit with the PS2000 mounted to the van. This is by design however to reduce any stress being transferred into the window frame and the heater itself.



Disclaimer:

The end-user of this product assumes all responsibility for the use or misuse of this product and Van Cafe shall not be held liable for any damage to person or property.

