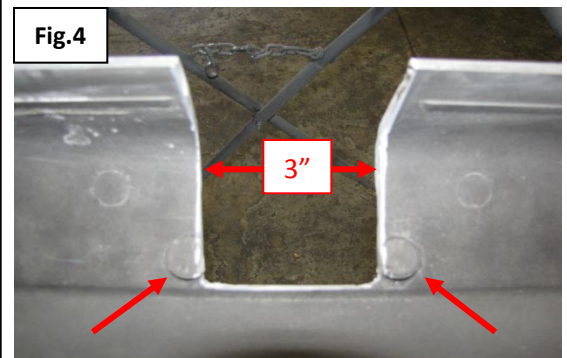
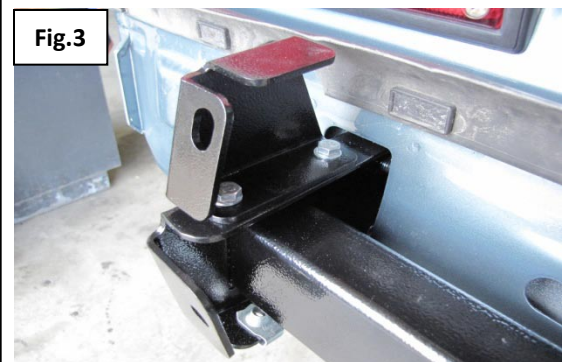
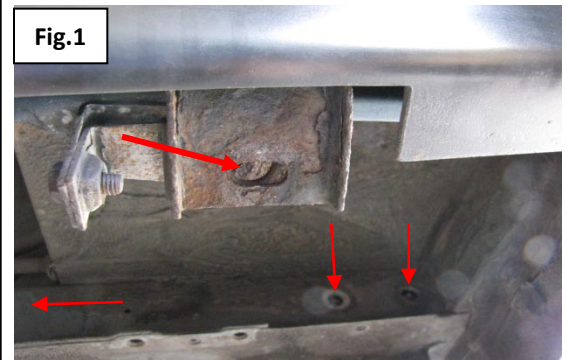
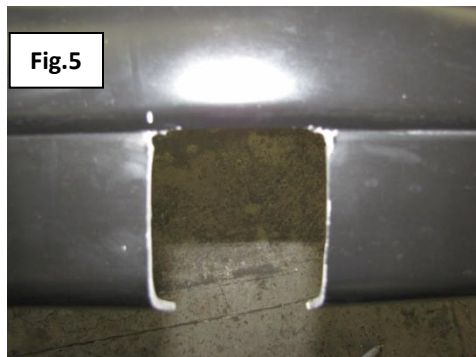




Hidden Bumper Hitch Installation Instructions For fiberglass and steel bumpers

FIBERGLASS BUMPER

1. Remove bolts holding on the sides of the stock fiberglass bumper (1). Also remove the bolts holding the bumper into the slots located on the Vanagon (2) (Fig. 1).
2. Remove the steel mounts from the fiberglass bumper these will not be used again (Fig. 2).
3. Test fit the hidden bumper hitch in the slots of the Vanagon where the old steel mounting brackets were located, hardware has been provided. Install the new mounting bolts into the 3 holes on each side to verify fitment is correct. Make sure you can thread in all 3 bolts on each side before proceeding to the next step.
4. After the hitch has been test fitted, while still temporarily mounted to the van, install the upper brackets on both the right and left sides, new hardware has been provided. Leave these brackets loose until the bumper skin has been attached in a later step (Fig. 3).
5. With the fiberglass bumper off, it is time to cut a small piece out of the fiberglass to accommodate the receiver. On the inside of the fiberglass bumper, towards the center, there are two circles (Fig. 4), that are embossed in the material. The width of material to cut out is 3". Center this 3" between the 2 embossed circles, using a cutoff wheel, cut from the bottom lip to the step in the fiberglass (Fig.5).

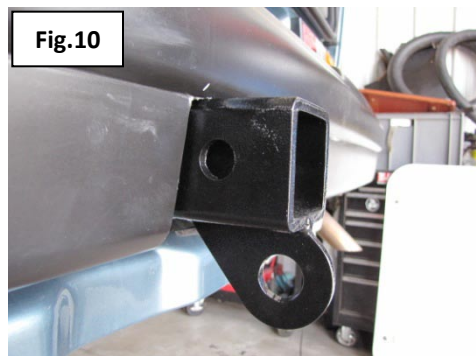
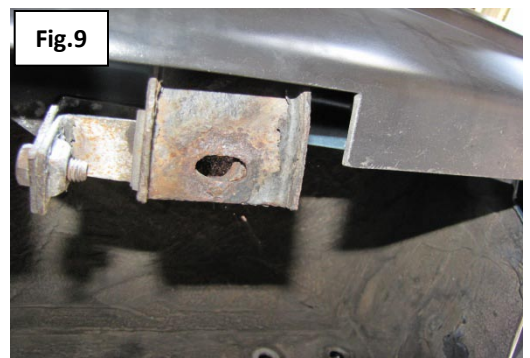
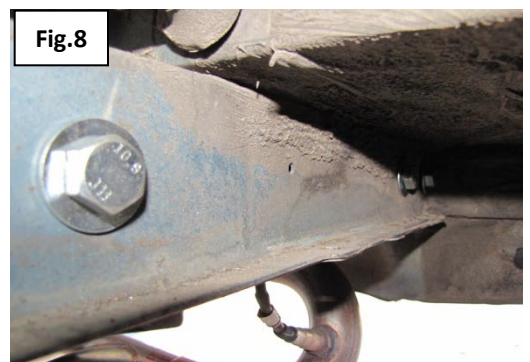
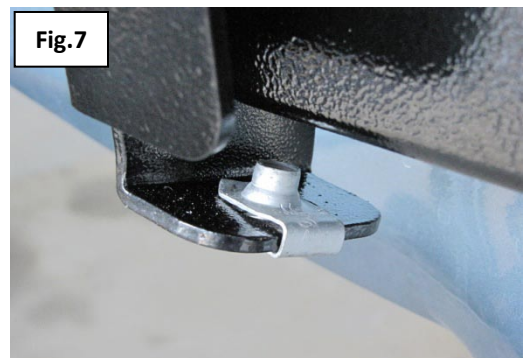
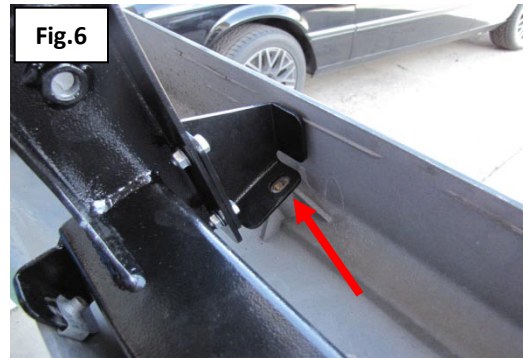




Hidden Bumper Hitch Installation Instructions **For fiberglass and steel bumpers**

FIBERGLASS BUMPER

6. After you have cut out the piece of fiberglass to accept the receiver, test fit the bumper over it to see if there is sufficient room for the receiver in that area that was removed.
7. Place the bumper on a table or set of saw horses and attach the hitch to the bumper. The upper bracket on the hitch who's mounting hardware should be loose is shown in (Fig. 6).
8. Place tabs on bottom bracket and use provided hardware to attach bumper to bracket (Fig. 7).
9. Tighten all hardware at this time before the bumper is installed into the rear slots of the van
10. Install bumper into the rear mounting slots of the Van. Install the 3 bolts on each side attaching the bumper into the slots. Leave all bolts loose until all bolts are started. Hardware is provided (Fig. 8).
11. Attach bolts to side tabs of fiberglass bumper to the existing brackets on the van that were previously removed (Fig.9).
12. Double check and make sure all your bolts are tight and your hidden bumper hitch installation is complete (Fig 10).





Hidden Bumper Hitch Installation Instructions **For fiberglass and steel bumpers**

STEEL BUMPER

1. For the steel bumper start by removing the bumper from the mounts, and the mounts from the van. Clean the general area on the inside and outside of the bumper that will be getting cut out.
2. Find the center by measuring the distance between the original mounting bracket bolt holes and make a mark (Fig.1).
3. From center, measure over 1 ½" towards both sides and make another mark to show where to cut. Using a straight edge, extend the lines to be cut towards the top edge of the bumper (Fig.2).
4. Measure down 1" from the top edge of the bumper near both vertical lines to be cut and make a mark, this will be the top edge of the cutout (Fig.3).
5. Double check your measurements on all 3 lines to be cut. When you are certain you have the correct measurements laid out, lay a piece of masking tape on the outside of all 3 lines. This will help protect the edge while being cut (Fig.4).

Fig.1

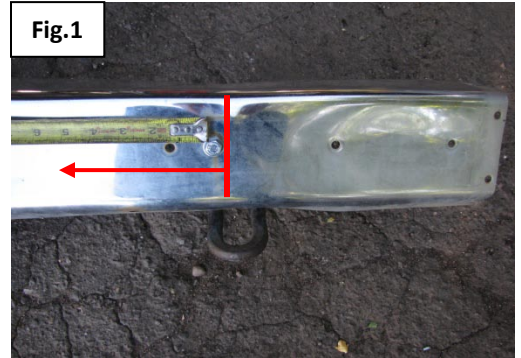


Fig.2

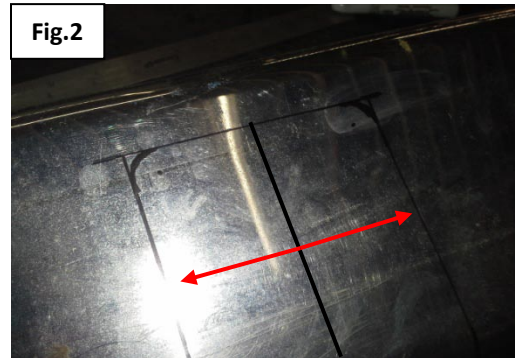


Fig.3

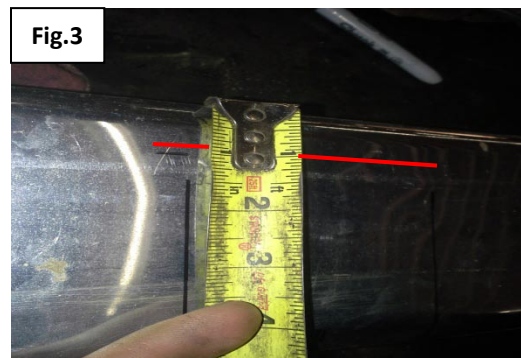


Fig.4





Hidden Bumper Hitch Installation Instructions **For fiberglass and steel bumpers**

STEEL BUMPER

6. Both top corners will need to be drilled (Fig.5), in order to get a clean cut without gouging. We chose to drill a ½" hole as it makes cutting out the rest much easier, however a smaller bit will work. It is advised that you layout and center punch the hole to be drilled to keep the bit from walking off the desired location to be drilled.
7. Once the corners have been drilled, the rest can then be cut using a cutoff disc on an angle grinder. Work your way down by doing the top edge cut first, and then down both sides. Test fit the hitch inside the bumper to make sure it fits and looks correct (Fig.6).
8. Touch up any sharp edges or burrs with a sanding disc or a file. Remove the tape and clean up any residue.
9. Mount the hitch on the van. Install the 4 "J" clips onto the hitch as shown in (Fig.7).
10. Make sure the "J" clips are oriented the correct way to accept the bolts (Fig. 8). Bolt on the bumper over the hitch (Fig.7).

Fig.5

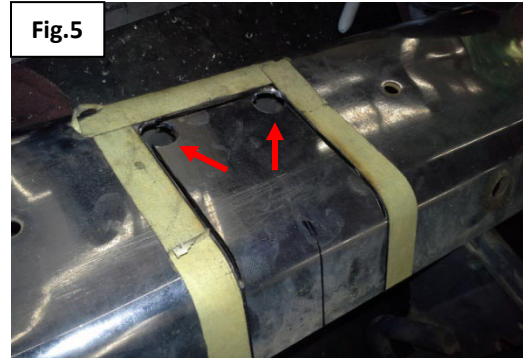


Fig.6



Fig.7



Fig.8

