



These instructions and the images herein are proprietary. Any unauthorized reproduction is prohibited.

GoWesty Clutch Pedal Rebuild Kit

This kit addresses a design flaw in the original clutch pedal assembly in two ways: It increases the bearing area and adds a self-lubricating bushing to the spot where the pedal is prone to wear out and eventually break.

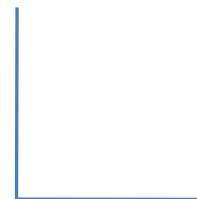
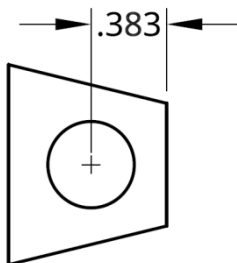
Included in the kit are a drill template, a new clevis pin, a new cotter pin, and a clevis pin bushing.

Note: Installation will require welding, grinding, and drilling, and may require a vice.

- 1. Using a welder, add material to close the ovoid or worn-through clevis pin hole on the clutch lever. Grind the welded material flush with the original surface.
- 2. Drill a new clevis pin hole using a 7/16" drill bit. The included template is to scale, and will help you locate the hole. GoWesty highly recommends using a drill press for this operation to ensure a correct press fit for the bushing. You may need to drill several smaller pilot holes leading up to the 7/16" hole.
- 3. Install the new bushing into the clevis pin hole. GoWesty recommends using a drop of Loctite to hold the bushing in place in the clutch lever. This bushing fits with a slight press fit, and inserting it into the clevis pin hole may require a press or a vice.



DRILL TEMPLATE FOR NEW CLEVIS PIN HOLE (check scale with ruler):



1 inch x 1 inch