

Folding Shelf Kit

Assembly & Installation Instructions



Introduction

Thank you for purchasing the Rocky Mountain Westy **Folding Shelf Kit**. We pride ourselves in the products we develop and would not bring an item to market that we did not fully believe in.

This **Folding Shelf Kit** will work in conjunction with our **Swing Away Carrier Kit** allowing you add additional exterior storage space to your Vanagon.

Before You Get Started

It is recommended that you read through these instructions fully before beginning the installation process. This step will help you understand the entire process beforehand which will make the installation go smoothly. The **Folding Shelf Kit** will be installed on a **Swing Away Carrier Kit** designed for the **Driver's Side** of a Vanagon.

Tools Required:

- 9/16" Wrench
- 13mm Wrench
- 13mm Socket
- 5mm Hex Bit Socket
- Drill
- Ratchet

Parts Included:

- Shelf
- Shelf Support Frame
- Backing Plate
- Hardware Package

These instructions are to be used in conjunction with our **Swing Away Carrier Kit** instructions.

Supplied Hardware

Included in the **Folding Shelf Kit** is a **Hardware Package**. This **Hardware Package** includes all of the hardware needed to assemble and mount the **Folding Shelf Kit** onto the **Swing Away Carrier Kit**.



Hardware Package:

- 3/8x16 Star Knob (x2)
- 8x1.25x50mm LG SS Hex Head Bolt (x 4)
- 5/16 SS DIN Washer (x 8)
- 8x1.25 Nylock Nut (x 4)
- 3/8x16x3/4" LG Carriage Bolt (x 2)
- 3/8x16x1" LG SS Button Head Screw (x 2)
- 3/8x16 Nylock Nut (x 2)
- 3/8" Black Plastic Nut Cover (x 2)
- Black Nylon Washer (x 8)

Prepping The Swing Away Carrier

Since we are installing the **Swing Arm** onto the driver's side of the van, the **Latch Post** from the **Swing Arm Carrier Kit** is orientated in this manner. We'll use the contents of **Hardware Package C** from the **Swing Arm Carrier Kit** in order to attach the **Shelf Support Frame** and **Latch Post** to the **Swing Arm**.



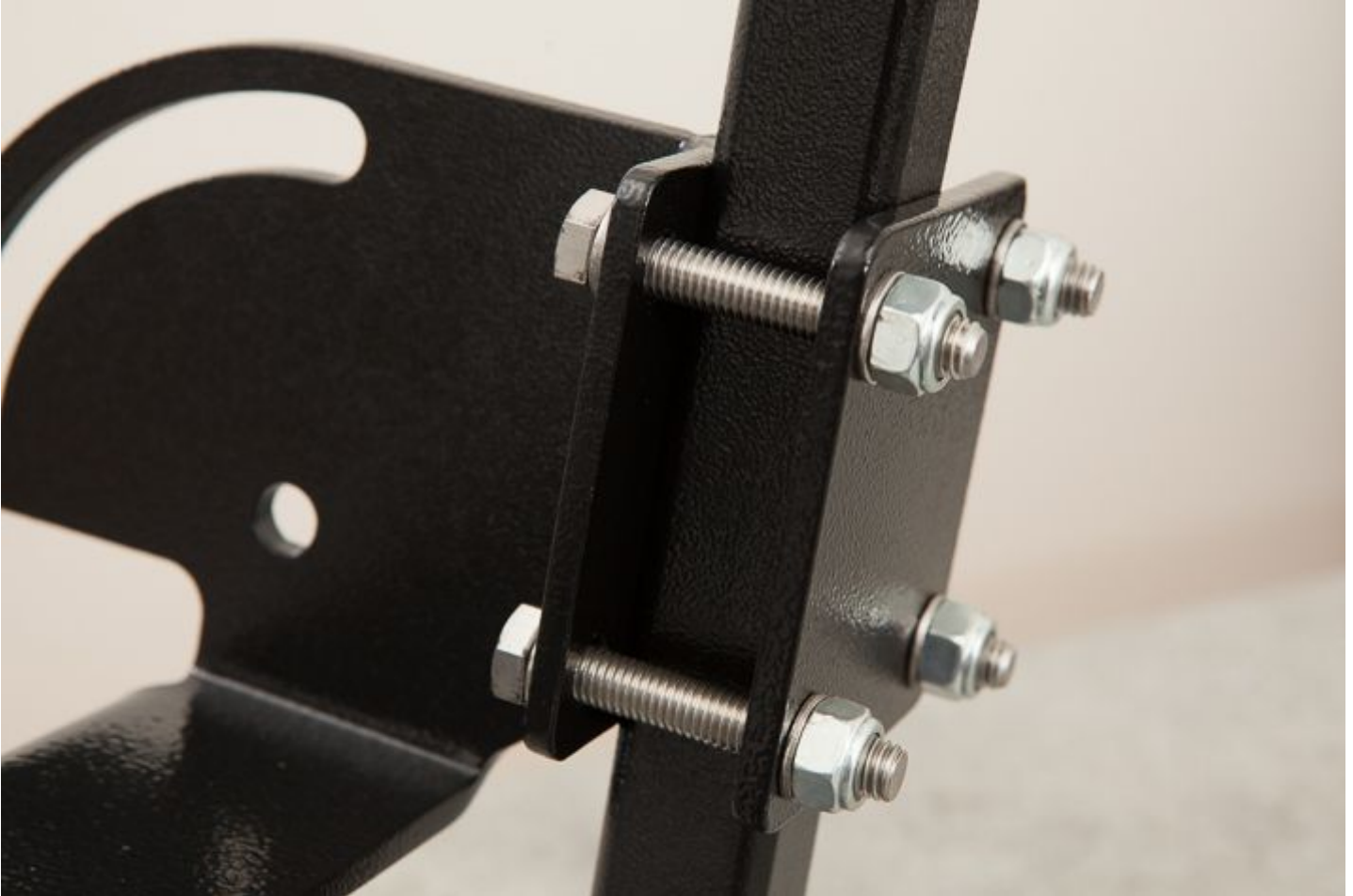
The hardware in this portion is supplied in **Hardware Package C** of your **Swing Away Carrier Kit**. Use a **3/8x16x1.25 SS Button Head Screw**, **3/8 SS Washers (x 2)** and a **3/8x16 Nylock Nut** at each mounting hole as shown. Use a **Drill** with a **5mm Hex Bit Socket** and a **9/16 Wrench** in order to securely fasten the **Latch Post** and **Shelf Support Frame** to the **Swing Arm**.

Order from Top to Bottom is **Swing Arm**, **Latch Post** then **Shelf Support Frame**.



Now onto the far side of the **Shelf Support Frame**. Thread a **8x1.25x50mm LG SS Hex Head Bolt** and **5/16 SS DIN Washer** through the **Shelf Support Frame** and through the **Backing Plate**. Add another **5/16 SS DIN Washer** and finish it off with a **8x1.25 Nylock Nut**. This is to be done at each mounting hole.

Use a **13mm Wrench** and a **Ratchet** with a **13mm Socket** in order to fully tighten each bolt assembly.



The **Swing Arm** and **Shelf Support Frame** should look like this at this point.



The **Shelf** can be slid into place. There are two mounting holes closest to one end of the **Shelf**. These holes will line up with the hole/slot on the **Shelf Support Frame**.



Starting with the bolt hole closest to the side of the **Shelf** (top of this photo) working from the inside of the **Shelf** outwards. **3/8x16x1" LG SS Button Head Screw, Shelf, Black Nylon Washer, Shelf Support Frame, Black Nylon Washer** and **3/8x16 Nylock Nut**. Use a **Drill** with a **5mm Hex Bit Socket** and a **9/16 Wrench** in order to tighten down the assembly. Do not fully tighten this down, we need it to be snug enough to hold the assembly in place yet loose enough to allow the **Shelf** to swing up and down.

Now the slot furthest from the side of the **Shelf** (bottom of this photo) working from the inside of the **Shelf** outwards. **3/8x16x3/4" LG Carriage Bolt, Shelf, Black Nylon Washer, Shelf Support Frame, Black Nylon Washer** and **3/8x16 Star Knob**. This **Star Knob** will be tightened by hand in order to lock the **Shelf** into the open or stowed position.

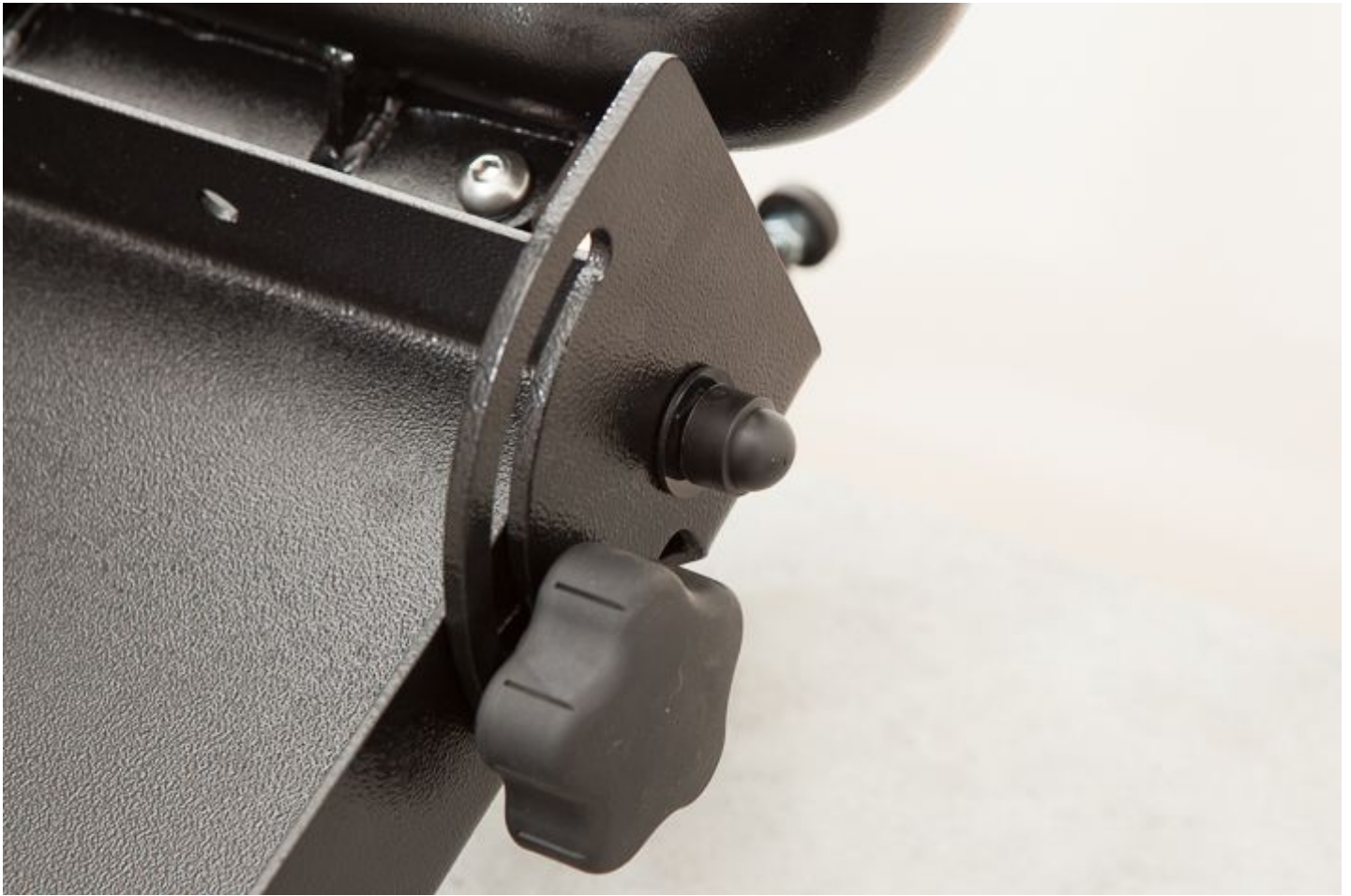
Repeat the process for the opposite side.



Place a **3/8" Black Plastic Nut Cover** over the exposed **3/8x16 Nylock Nut**.



The complete opposite side of the **Shelf**.



Installation Complete

The **Folding Shelf Kit** has been assembled and installed onto your Swing Arm. You can continue to follow the Installation Instructions for the **Swing Away Carrier Kit** in order to mount it to your Vanagon.



Thank you for your continued support of Rocky Mountain Westy products....