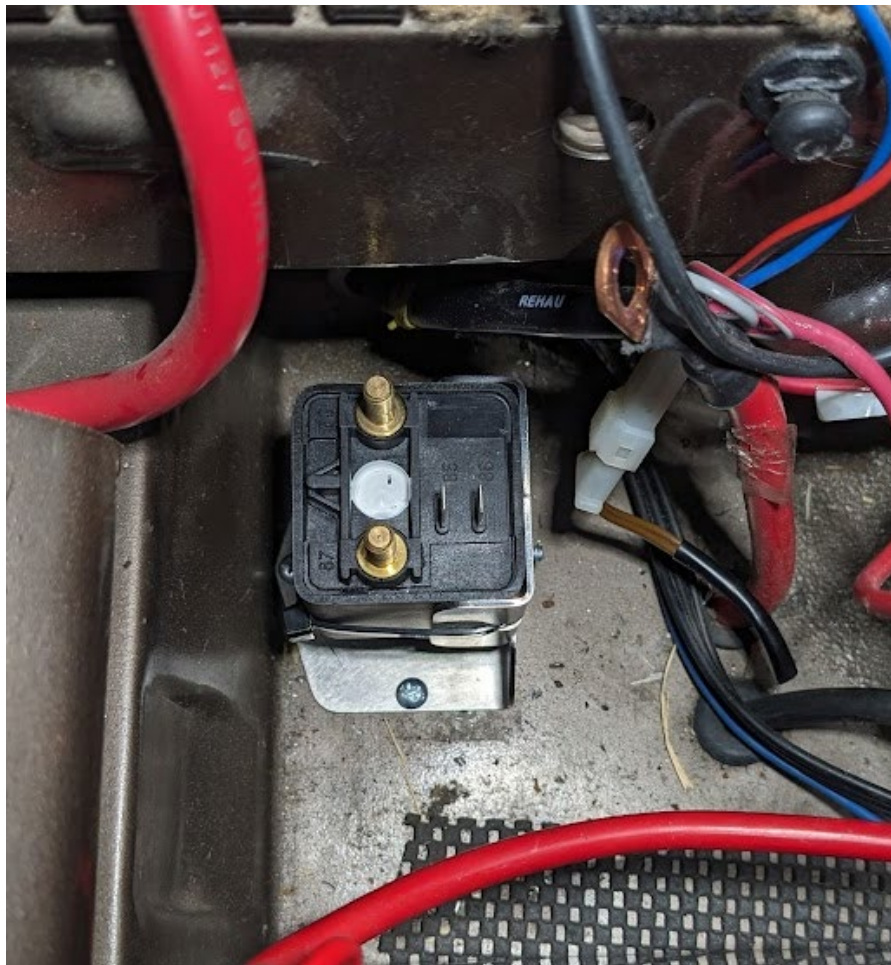


Battery Isolator Appendage for Victron Cyrix-ct Battery Combiner

This appendage is to be used in conjunction with the Rocky Mountain Westy Battery Isolator kit Instructions. This is specific for the revised Victron Battery Combiner type Isolator.

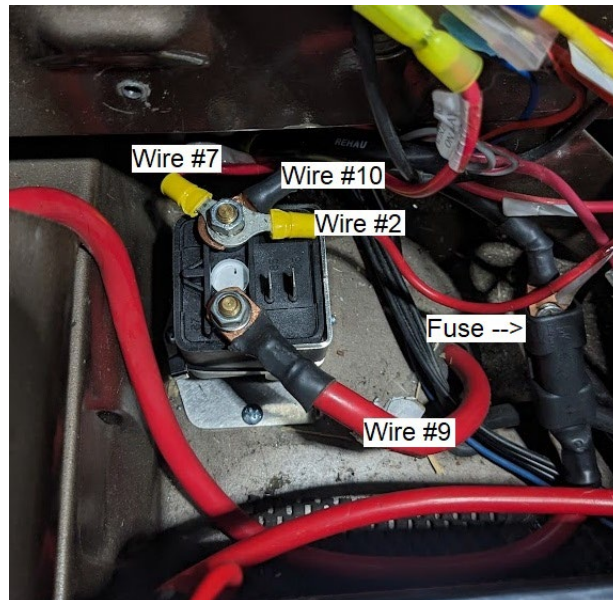
Mounting the Isolator:

1. Using the 3 provided self-tapping screws, mount the battery isolator assembly as shown in the corner of the battery compartment. *Make sure to leave enough space to get to all 3 screws*
2. Install the provided zip tie to further secure the isolator to the stainless bracket.



Victron Battery Combiner Mounting and Wire Hookup:

- **Wire 9** from the main battery positive post will now be attached to the **Stud #87** on the battery combiner.
- **Wire #2, Wire #7** and **Wire #10** will be connected to the **Stud #30** of the battery separator. **Be sure to add the included 80A fuse on either end of wire #10.**



- **Wire #6** will be connected to **Terminal 85** of the battery combiner.
- **Wire #4** will be connected to **Terminal 86** of the battery separator.

