



## Installation Instructions

### 8337 - Twin Peaks Front Winch Mount

- **Component/Subassembly Item List:**

<b>Part Number:</b>	<b>QTY:</b>	<b>Description:</b>
8338	1	Main Mount Assembly - Black Hammertone Powder Coat
8339	1	Front Center Plate - Black Hammertone Powder Coat
8340	1	Rear Cover Plate - Black Hammertone Powder Coat
8350	5	Backing Plate - Black Hammertone Powder Coat
8342/8341	1	Hardware Kit (Black or Silver Option)

- **Hardware Kit Contents:**

**Bag A: Winch Mount**

10 - M6X1.0X25 Grd 10.9 Hex Bolt  
20 - M6 Washer (Zinc)  
10 - M6X1.0 Nylock Nut (Zinc)  
5 - 3/8-16 X 5" Grd 8 Zinc Hex Bolt  
3 - 3/8"-16 Grd 8 Zinc Nylock Nut  
8 - 3/8 SAE Grd 8 Washer

**Bag B: Cover Plates**

6 - M6X1.0 U-nut  
6 - M6 Nylon Black Washer  
6 - M6 SS Washer (Blk or Sil)  
6 - M6X1.0X20 Bolt (Blk or Sil)

**Bag C: Fairlead + Winch**

2 - M10x1.5x25 Bolt (Blk or Sil)  
4 - M10 SS Washer (Blk or Sil)  
2 - M10x1.5 Thin Nylock Nut  
2 - 3/8-16x1-1/4" FL HD Screw Zinc  
4 - 3/8-16 Grd5 Square Nuts  
1 - Loctite® 243, 0.02Oz capsule

- **Required Tools:**

3/8" Ratchet  
9/16" Socket  
9/16" Box end wrench  
10mm Socket  
10mm Box end wrench  
3 to 4 vice grip pliers or  
small C-clamps

3/8" Torque Wrench  
7/32" Allen Head Wrench  
4mm Allen Head Wrench  
6mm Allen Head Wrench  
16mm or 5/8" Box end Wrench  
Painters Tape

Standard Drill Bit set  
Paint Pen  
Cordless Drill  
Center punch  
Your favorite beverage  
Some tasty Jams

- **Required Components (Not Included):**

**1. The Winch** – We recommend using an 8K to 12K winch, **making sure that its overall dimensions don't exceed what is shown in the diagram below.** Using a winch with a top mounted solenoid box is preferred as well to simplify use and ease of wiring installation.

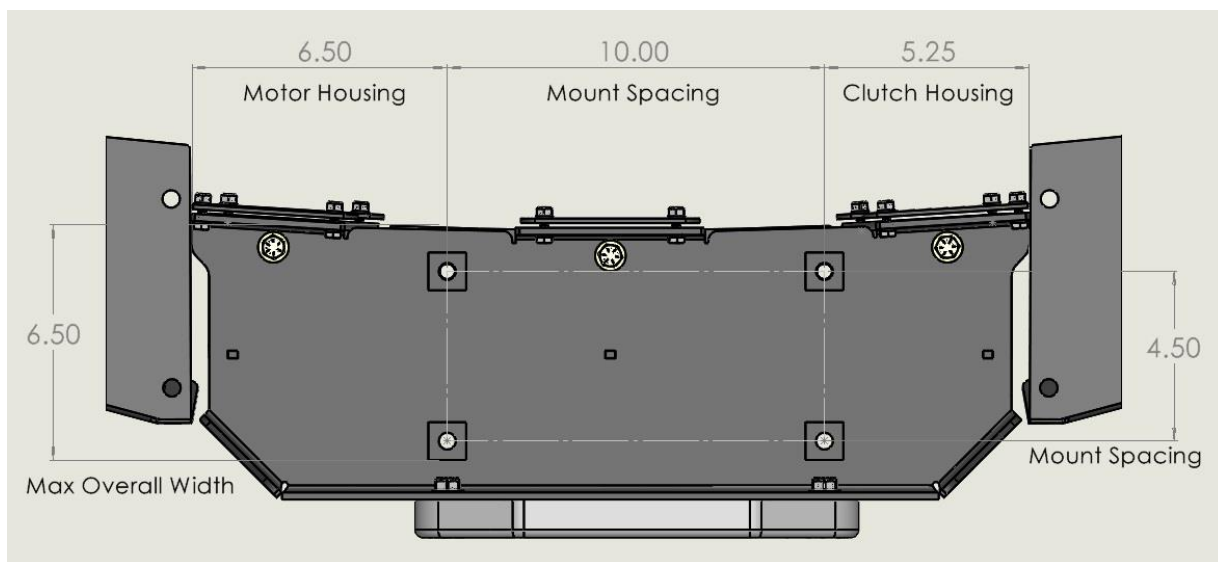
**List of confirmed winch fitments:**

SCAR® 10K, 12K (VC Recommended)

Warn® M8000

Warn® VR EVO 8 - 10

**Winch Sizing Diagram:**



**2. Power Wiring** – Depending on your winch, you may or may not have enough power cable length to run all the way to your Battery. **We highly recommend making sure the cable is long enough before starting the installation.** If you need to source a longer power cable, make sure to get one that is as large or larger than the cable provided with your winch. Try to keep the cable length as short as possible and without any splices or potential points of failure. The cables can connect to either an Aux Battery or your Primary Battery, whichever allows the shortest possible wiring. Secure the cables up and away from any potential pinch points or moving components to prevent any abrasion of the cable. **Important: Keep in mind that both power and ground will need to attach directly to the battery terminals (Do not attach the ground wire to the chassis).** Refer to your winch instructions for specific wiring and proper use details.

## Installation:

**Step 1:** The first step will be to install your Twin Peaks front bumper if you haven't already done so, making sure to leave off the center section. If you already have a bumper installed, remove the front center section piece. Leave the rest of the bumper installed for now.



---

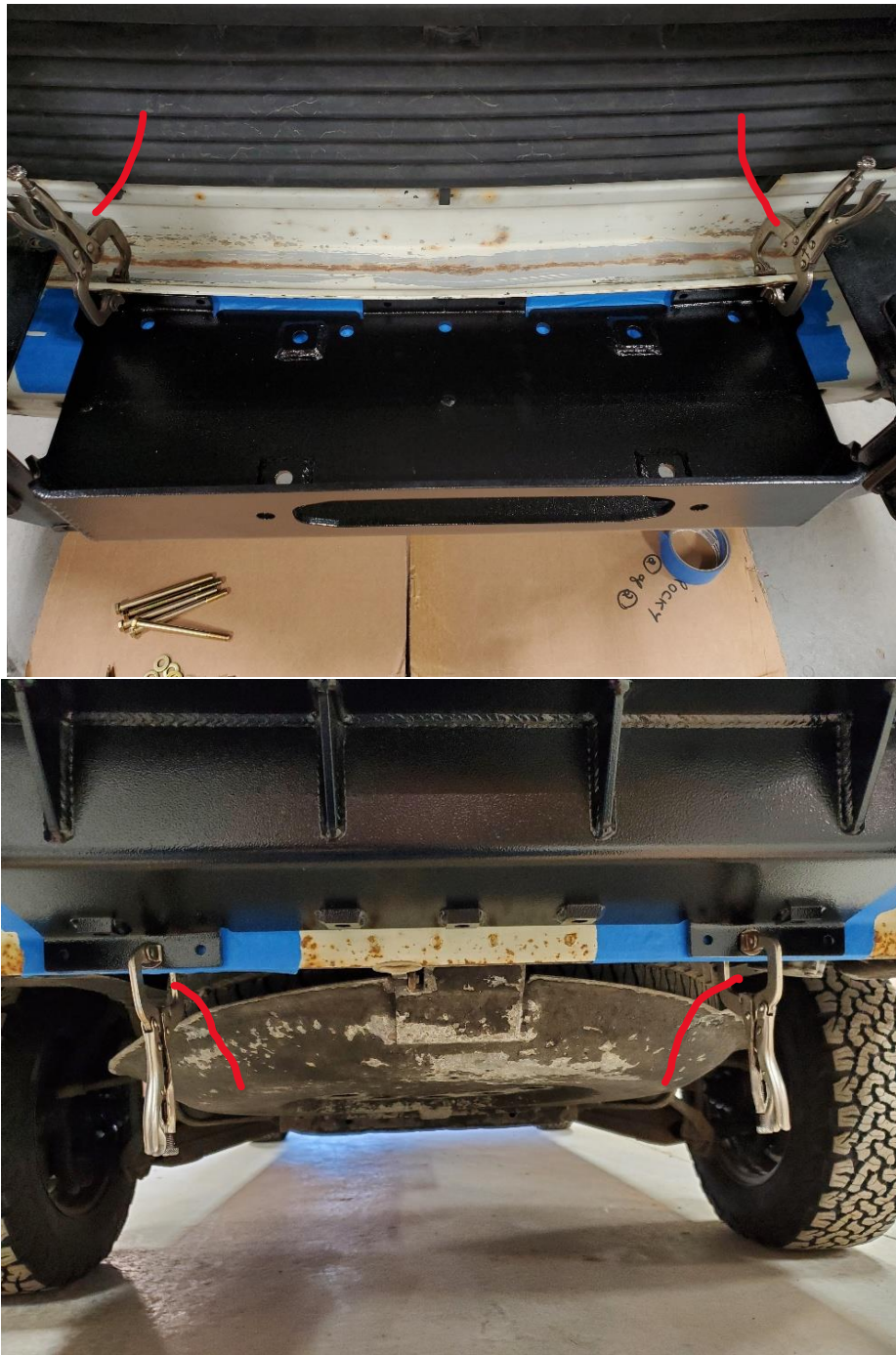
**Step 2:** Using some masking tape, tape the center portion of the crash beam, making sure to cover all areas where the winch mount will contact. This will not only help protect the finish on the winch mount and crash beam but give us a nice contrasting surface for marking the holes.







**Step 3:** Install the winch mount onto the van, and center it between the wings. Once centered, use a clamping plier to clamp the mount to the upper pinch weld to prevent it from moving around. **TIP: Temporarily mounting the Front Cover Plate to the wings may help you center the mount on the van.** Use two more clamping pliers to clamp the two lower tabs of the mount to the lower pinch weld. Ensure that the clamps are tight enough to 'suck' the mount to the pinch weld.



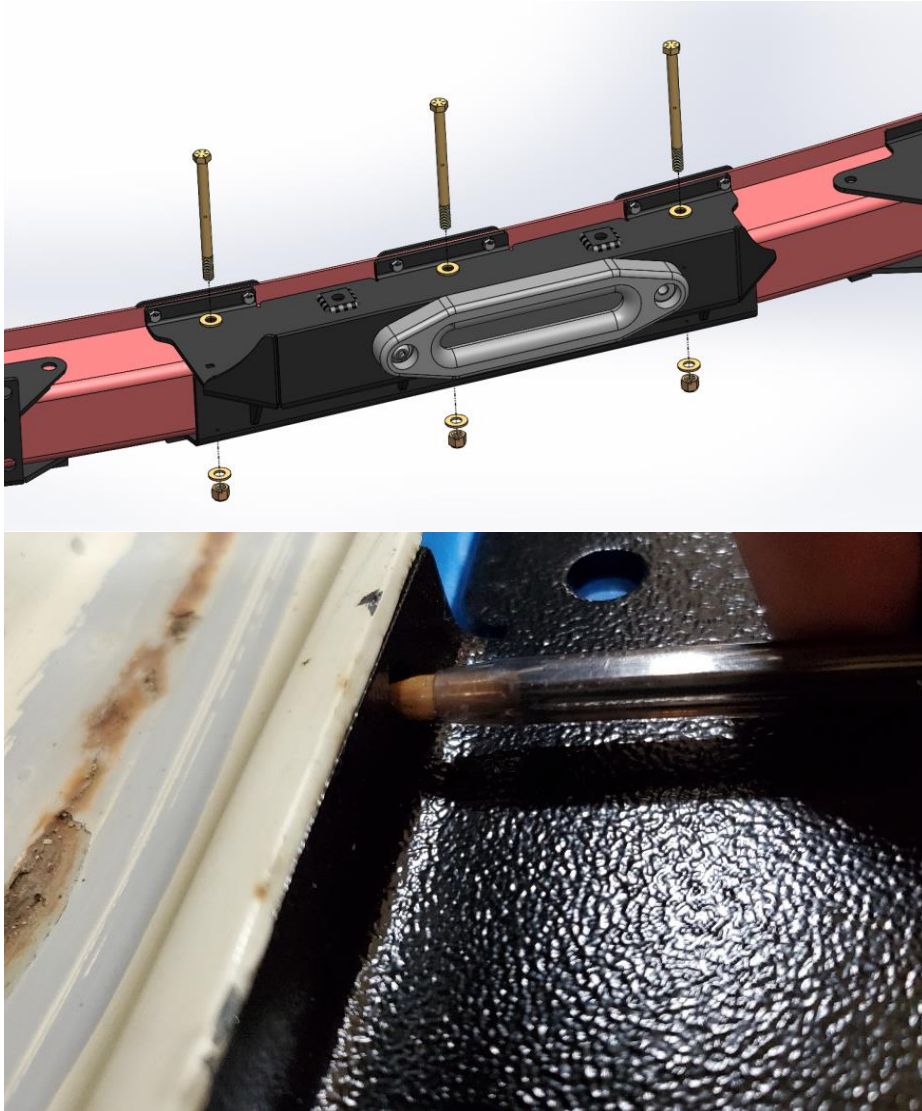
---

**Step 4:** Once the mount is secured with clamps, drill through the five top and bottom 3/8" mounting holes (Two of which will be the back winch holes). The winch mount will act as a drill guide but try to keep the drill as perpendicular to the surface as possible.



---

**Step 5:** With all ten 3/8" holes drilled, temporarily install three of the 3/8" bolts with washers and Nylock nuts (**Bag A**). Tighten the bolts down by hand just until there's no visible gaps between the mount and the crash bar. Next, mark the ten small holes using a pen or sharpie.





---

**Step 6:** Once each hole has been marked, unbolt the winch mount and remove it from the van. Using a center punch to carefully mark the center of each of the 10 holes.



---

**Step 7:** Using a small drill bit ( $1/8''$  or smaller) drill the center of each hole working up to a  $5/16''$  hole in small steps. Doing so in this way will help prevent any 'bit walk' and keep the hole in the correct position.



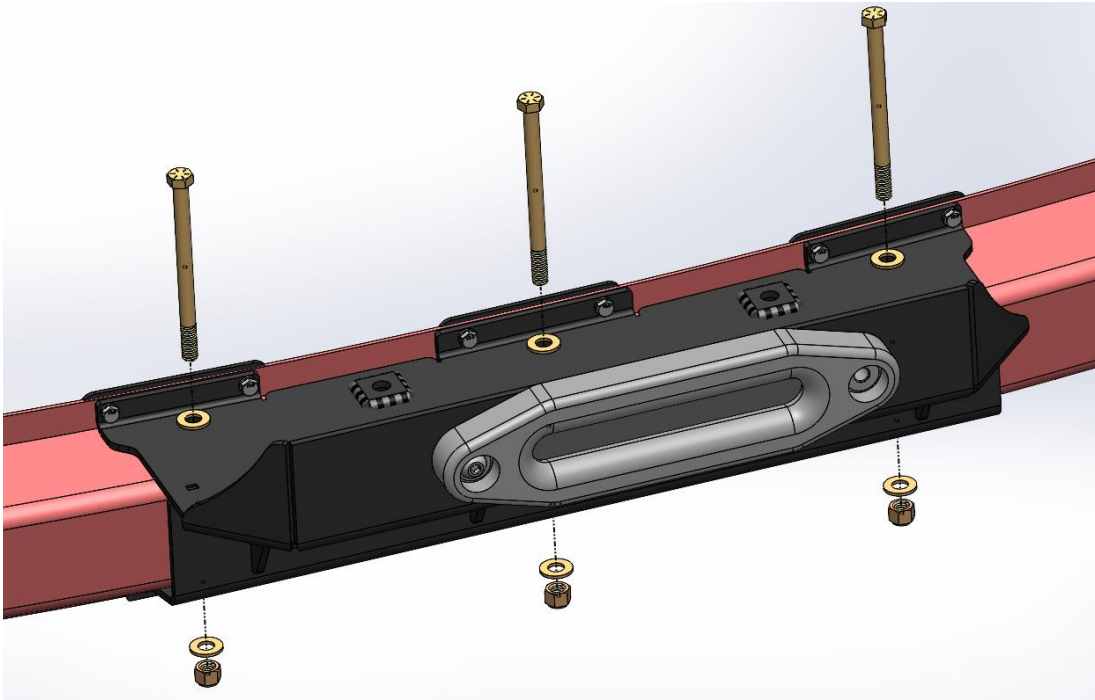
---

**Step 8:** After all holes are drilled, remove any remaining burrs with a small file or pick. You can also remove the painter's tape and touch up each drilled hole and the winch mount with a paint pen or some paint with a small brush. **TIP: You may choose to take the time to paint the crash bar black for a nice, muted look.**



---

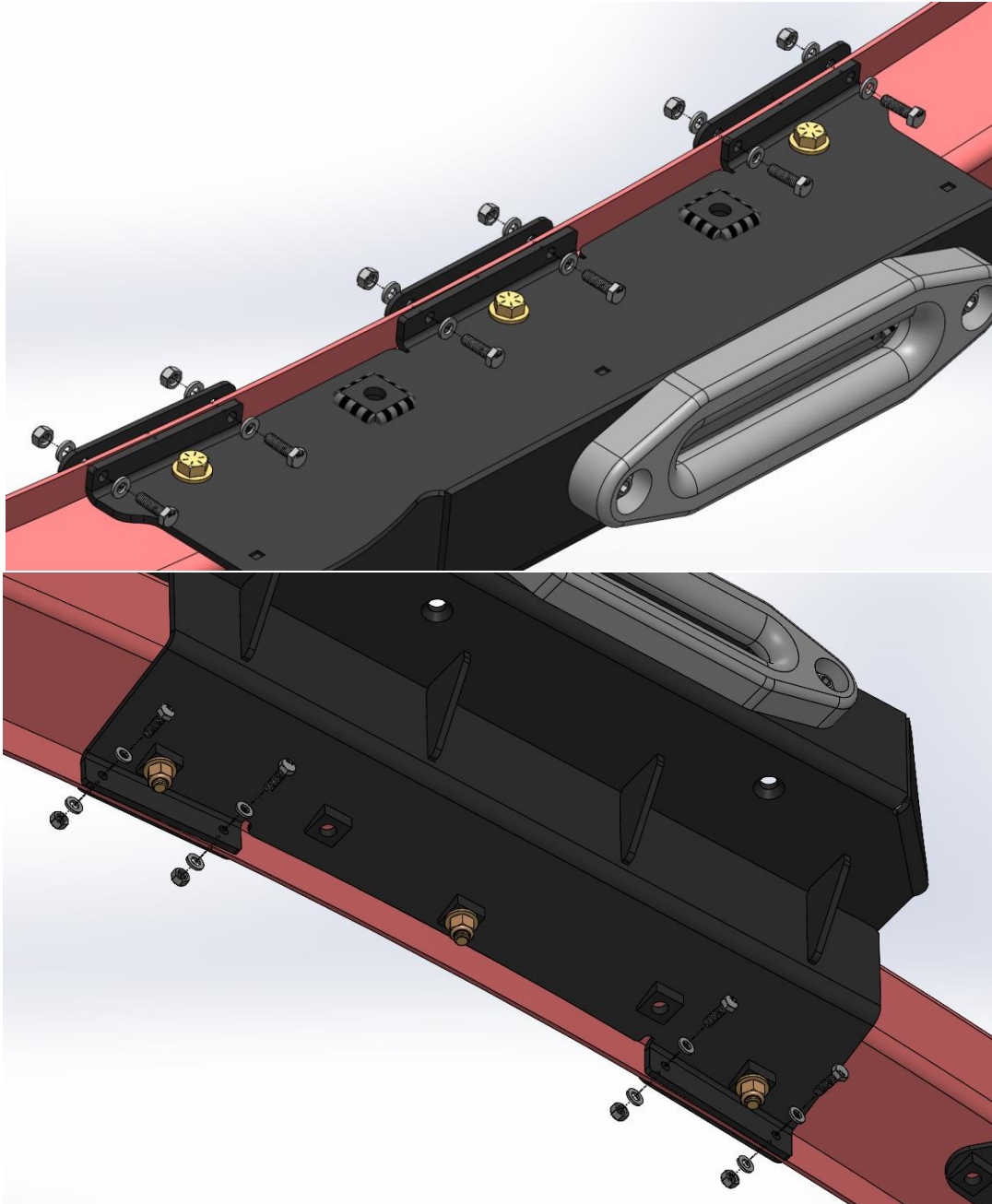
**Step 9:** Once the holes have been touched up, you can now reinstall the winch mount using the (3) 3/8" Bolts, washers and nylock nuts, but leave them hand tight for now.



---

**Step 10:** Next, install the (10) M6 Bolts, washers, backing plates and nylock nuts to attach the mount to the upper and lower pinch welds (**Bag A**). Keep each of the bolts loose until all of them are installed. Tighten the (10) M6 bolts to 16Nm (142 in/lbs) and torque the (3) 3/8" bolts to 35 Ft/Lbs.

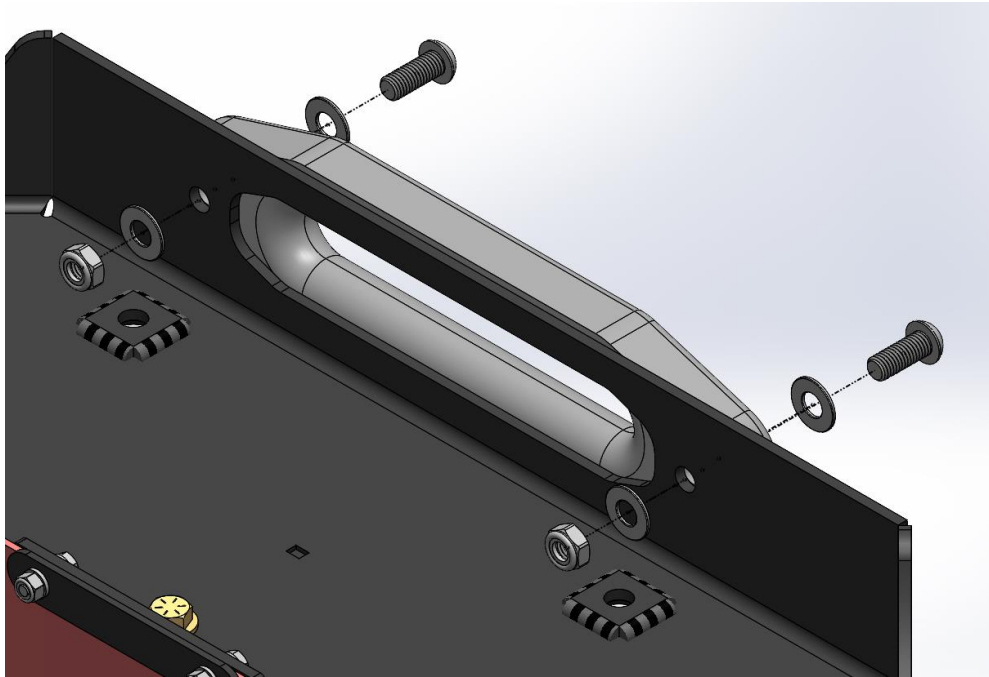
**TIP:** After torquing, double check the two winch mount holes with one of the 3/8" bolts to make sure it can still easily go all the way through the mount. If not, you may need to chase these out with the drill.





---

**Step 11:** Next, install your fairlead (usually included with your winch) using the included M10 button head screws, washers and the thin nylock nuts if you haven't already done so (**Bag C**).  
**Note:** The fairlead will need to be mounted before the winch is installed.



---

**Winch Assembly notes (before mounting):**

Before installing the winch on to the van, install the solenoid assembly to the winch according to the winch manufacturer's instructions. Also install the ground wire to the winch motor as the wiring will be tricky to access once the winch is installed onto the van. **Tip: We also recommend removing the winch cable by free-spooling the drum and simply pulling out the line. This will allow you to access the rear winch nuts if they happen to fall out.**

---

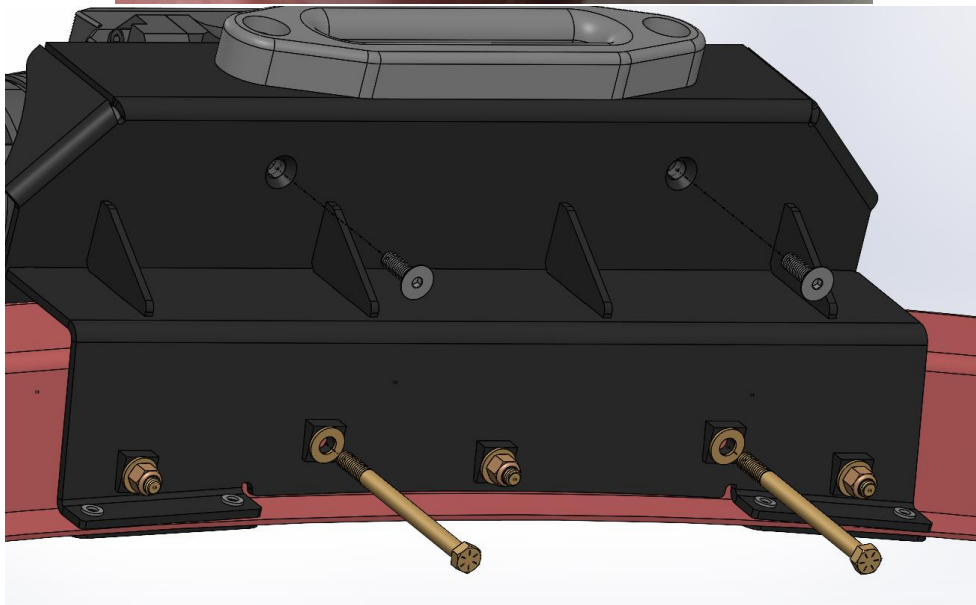
**Step 12:** With the winch fully prepped, you can now go ahead and install the four provided square 3/8-16 nuts with the flat side facing down (**Bag C**) **Note: do not use the nuts provided by your winch.** Next, carefully drop in the winch on the mount making sure not to lose the square nuts. The power and ground wires can be routed through the passenger side cavity under the lower grill.





---

**Step 13:** Put some of the provided blue Loctite on the end of the (2) 3/8" countersunk bolts and the (2) 3/8" bolts (**Bag A, and C**). Install them into the winch, making sure the square nuts are correctly in the winch pockets. Using a 7/32<sup>nd</sup> Allen head socket bit and a 9/16" socket, torque the bolts to 30ft/lbs.



---

**Step 14:** With the winch fully installed, you can now install the Front and Rear cover plates using the supplied M6 button head bolts, SS washer, Plastic washer and J-Clip nuts (**Bag B**). Install each bolt and simply tighten them down by hand.





---

**Step 15:** You can now route and secure the power cables to the battery. Once powered up, go ahead and turn on the winch and spool back in the winch cable leaving roughly 3-4ft making sure to keep tension on the cable to ensure it spools correctly (like threads of a bolt). Install the cable hook, hook tether, and fully spool in the winch to keep a little tension on the fairlead.



**Congratulations! You've just completed the installation of your new Twin Peaks Winch Mount! Happy Winching!**

## Disclaimer:

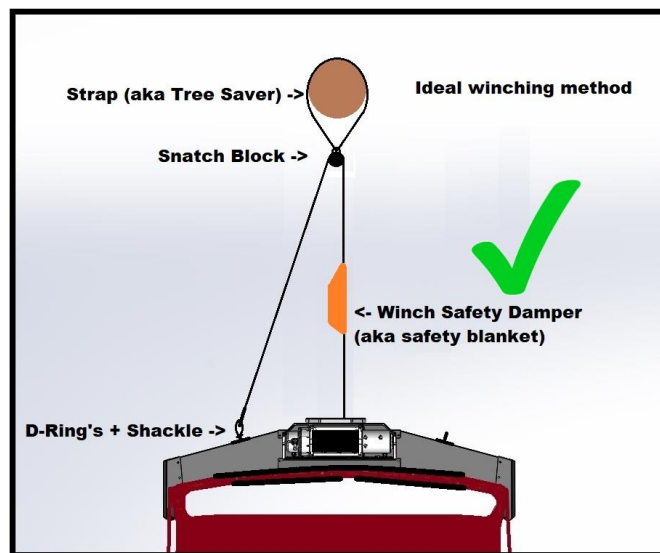
### **WINCH RECOVERY IS INHERENTLY DANGEROUS!**

The end-user of this product assumes all responsibility for the use or misuse of this product. Neither Van Cafe nor Rocky Mountain Westy shall be held liable for any damage to person or property.

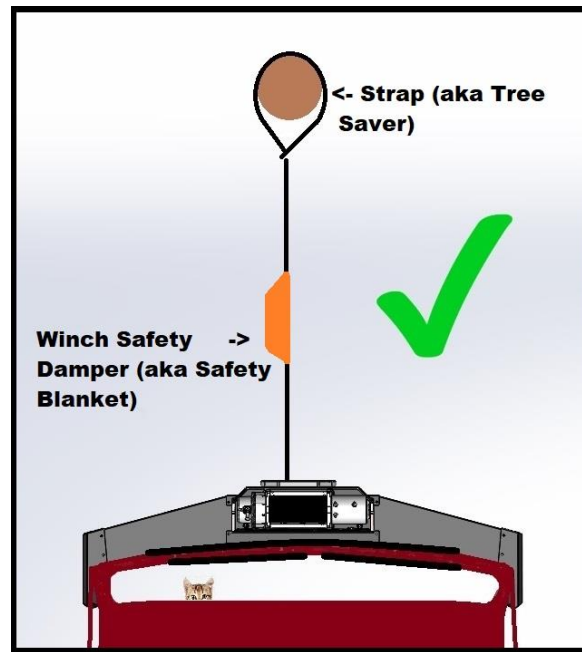
---

**Proper use instructions:** Here are some tips to get the safest use possible out of your winch setup, while reducing the potential for any damage to your van or person. **Be sure to reference your winch instructions for more details.**

- The ideal winching method is to utilize a 'Snatch Block' to double up the winch line back to the van. Doing so will not only greatly reduce the load on the winch itself, but also help spread the load on the van structure. To use the snatch block you will need a strap and at least two shackles (one on the van and one on the snatch block). Use this method whenever possible.

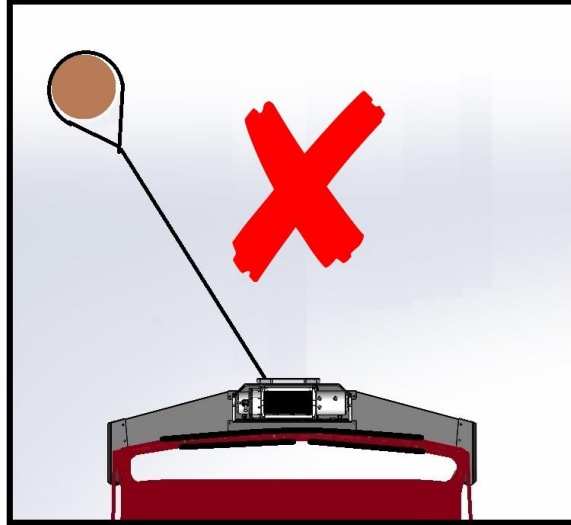


- A straight-line winching method is commonly used for those situations where there won't be as much load on the winch or vehicle, or situations that require a long spool out to reach the anchor point.



- Another safety item that is good to have when winching is a Winch Safety Damper, or a “safety blanket”. These are designed to be placed on the winch side cable so in the case of a line failure the Damper will effectively absorb the kinetic energy of the line. **Note: This should be considered required equipment if using a steel cable due to the potential risk.**

- **What not to do:** Unless it is absolutely necessary given the circumstances, avoid doing any side pulls with your winch. This can put significant stress on the winch, as well as the van structure potentially causing damage. Most side pulling situations can be avoided by simply choosing a different anchor point or using a snatch block to straighten out the pulling direction.



**Disclaimer:**

**WINCH RECOVERY IS INHERENTLY DANGEROUS!**

The end-user of this product assumes all responsibility for the use or misuse of this product. Neither Van Cafe nor Rocky Mountain Westy shall be held liable for any damage to person or property.

